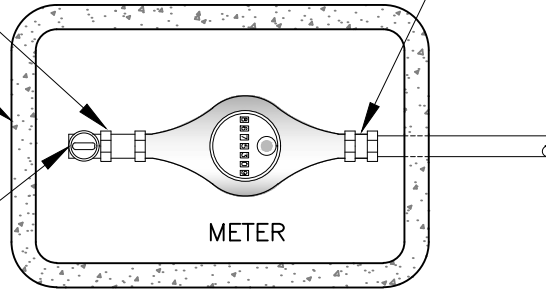


FOR NEW 1" SERVICE TO EXISTING 3/4" METER USE MUELLER H-10889 METER BUSHING

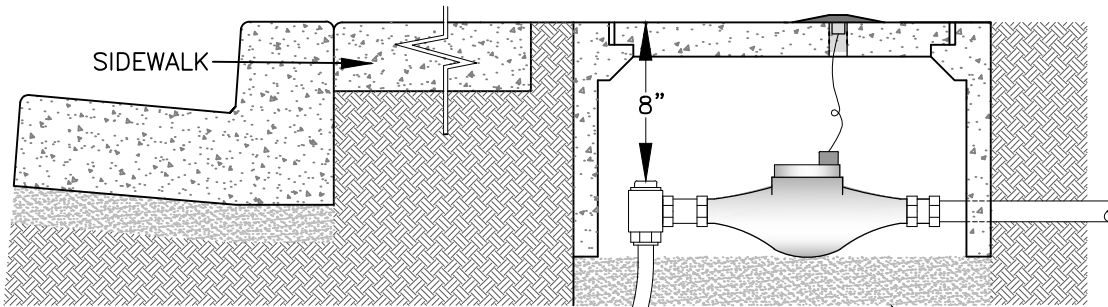
CHRISTY BOX, B12 WITH "WATER" IMPRINTED ON THE LID, B12P TO BE USED WITH 3/4" METER  
CHRISTY BOX, B16 WITH "WATER" IMPRINTED ON THE LID, B16P TO BE USED WITH 1" METER.

ANGLE STOP, MUELLER B-24258

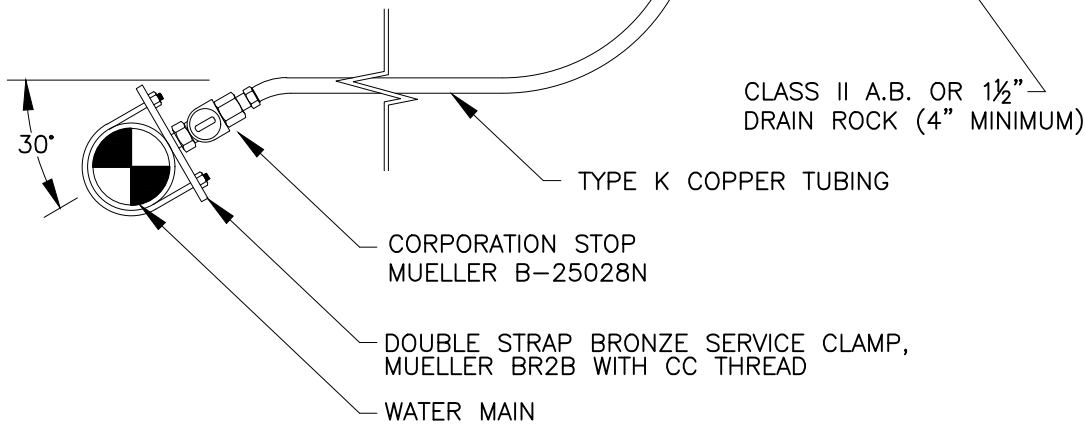
MUELLER H-10871 INSULATED STRAIGHT METER COUPLING



DOMESTIC SERVICE



DOMESTIC SERVICE



CLASS II A.B. OR 1 1/2" DRAIN ROCK (4" MINIMUM)

TYPE K COPPER TUBING

CORPORATION STOP MUELLER B-25028N

DOUBLE STRAP BRONZE SERVICE CLAMP, MUELLER BR2B WITH CC THREAD

WATER MAIN

**NOTES**

1. ALL CORP STOPS, ANGLE METER STOPS, COUPLINGS AND CONNECTIONS SHALL BE LEAD FREE MUELLER 110 COMPRESSION TYPE FITTINGS OR APPROVED EQUIVALENT BY CITY.
2. METER INSTALLATION MAY REQUIRE CITY ISSUED, ELECTRONIC RADIO READ UNIT, AT CITY'S DIRECTION.
3. WATER METER SHALL BE LOCATED WITHIN THE PUBLIC RIGHT-OF-WAY AND, WHEN POSSIBLE, OUTSIDE OF THE SIDEWALK AND WITHIN LANDSCAPED AREAS, UNLESS OTHERWISE APPROVED BY THE CITY ENGINEER.



*City of San Bruno*  
*Standard Detail*

**1" RESIDENTIAL  
WATER SERVICE**

DATE: JAN. 2026

DRAWN BY: DA

CITY ENGINEER:

DocuSigned by:

*Hae Won Ritchie*

APPROVED BY:

D109F378D35040A  
HAE WON RITCHIE

R.C.E. C69532

**W-01**

DETAIL NO: