



SAN BRUNO RECREATION & AQUATIC CENTER

City Council Update

October 25, 2022





AGENDA

1. Construction Update and Look Ahead Schedule
 - a) Project Information Update
 - b) Completed To Date
 - c) Schedule Update
 - d) Change Orders Report / Budget Update
 - e) What's Happening Next 30 Days and Beyond
 - f) Other Projects Update
 - a) Solar PV Update
 - b) Crystal Spring / City Parkway Intersection
 - g) Other Project Update
 - a) Beckner Shelter Road Rehab
 - b) Crystal Spring Sidewalk
2. Questions

Construction Update and Look Ahead Schedule



PROJECT INFORMATION



Start Date: September 2021



Project Completion: Fall 2023



Estimated Cost Completed To Date: 39.17% (September 2022)



EarthCam Link: https://share.earthcam.net/RecCenterBuild/rec_center_build/camera/view_1



Multivista Aerial Photo on 6/08/22



Multivista Aerial Photo on 10/12/22

Construction Update and Look Ahead Schedule

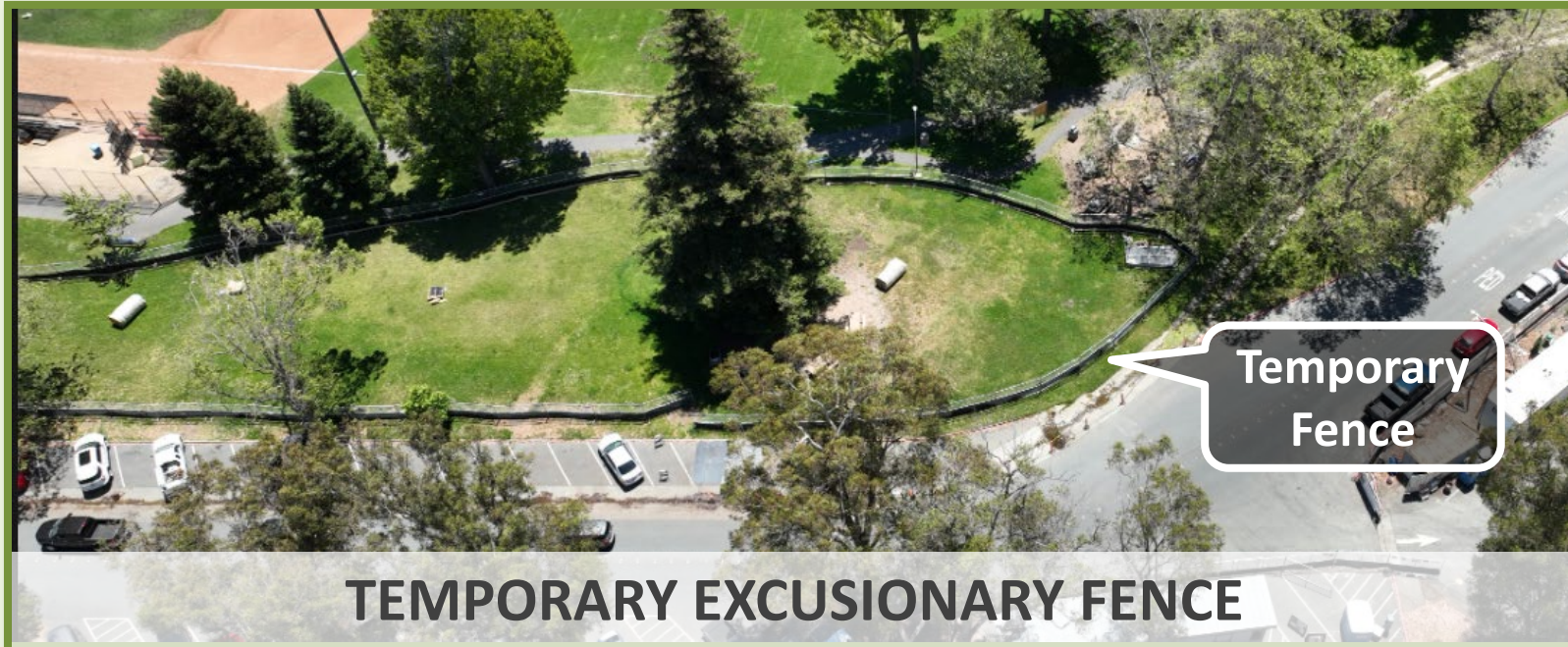


COMPLETED TO DATE - Recap of Field Activities

<u>MONTH</u>	<u>SCHEDULED ACTIVITY</u>	<u>COORDINATION</u>	<u>CHALLENGES</u>	<u>COMPLETED</u>
JUNE	Continue Foundation Excavation, Rebar, Under Slab Utility and Creek/Park, Exclusionary fence	Design Team / Building Inspection, Biologist, USACE, CDFWL, RWQCB & Public Outreach	Wet Creek and Contaminated Soil Disposal	Complete
JULY	Foundation concrete pours, Underground utility installation, Grading at creek, 10" waterline at Crystal Springs	Design Team, Arborist, Biologist, USACE, CDFWL, RWQCB & Public Outreach	Creek Dewatering, Drying and Tree Protection	Complete
AUG	City Park Way road closure, Steel frame erection Continue underground utility installation, Cofferdam & bypass and Creek Dewatering	Design Team, Health Department, Arborist, Public Outreach Google Navigations	Traffic Control Contaminated Soil Tree Protection	Partially Complete
SEPT	City Park Way road closure, Steel Framing, Roofing and Decking Continue underground utility installation, Creek Reconstruction	Design Team, Arborist Public Outreach Google Navigations	Traffic Control Contaminated Soil Tree Protection Unforeseen Obstruction	Ongoing
OCT	City Park Way road closure, Steel Framing, Roofing and Decking Continue underground utility installation, Complete Creek Reconstruction	Design Team, Arborist Public Outreach Google Navigations	Traffic Control Unforeseen Obstruction October 15 Creek Deadline	Ongoing

Construction Update and Look Ahead Schedule

COMPLETED TO DATE (JUNE)



TEMPORARY EXCUSORY FENCE



BUILDING FOUNDATIONS, EXCAVATIONS AND REINFORCING BARS



BUILDING FOUNDATIONS, EXCAVATIONS AND REINFORCING BARS

Construction Update and Look Ahead Schedule

COMPLETED TO DATE (JULY)



Construction Update and Look Ahead Schedule

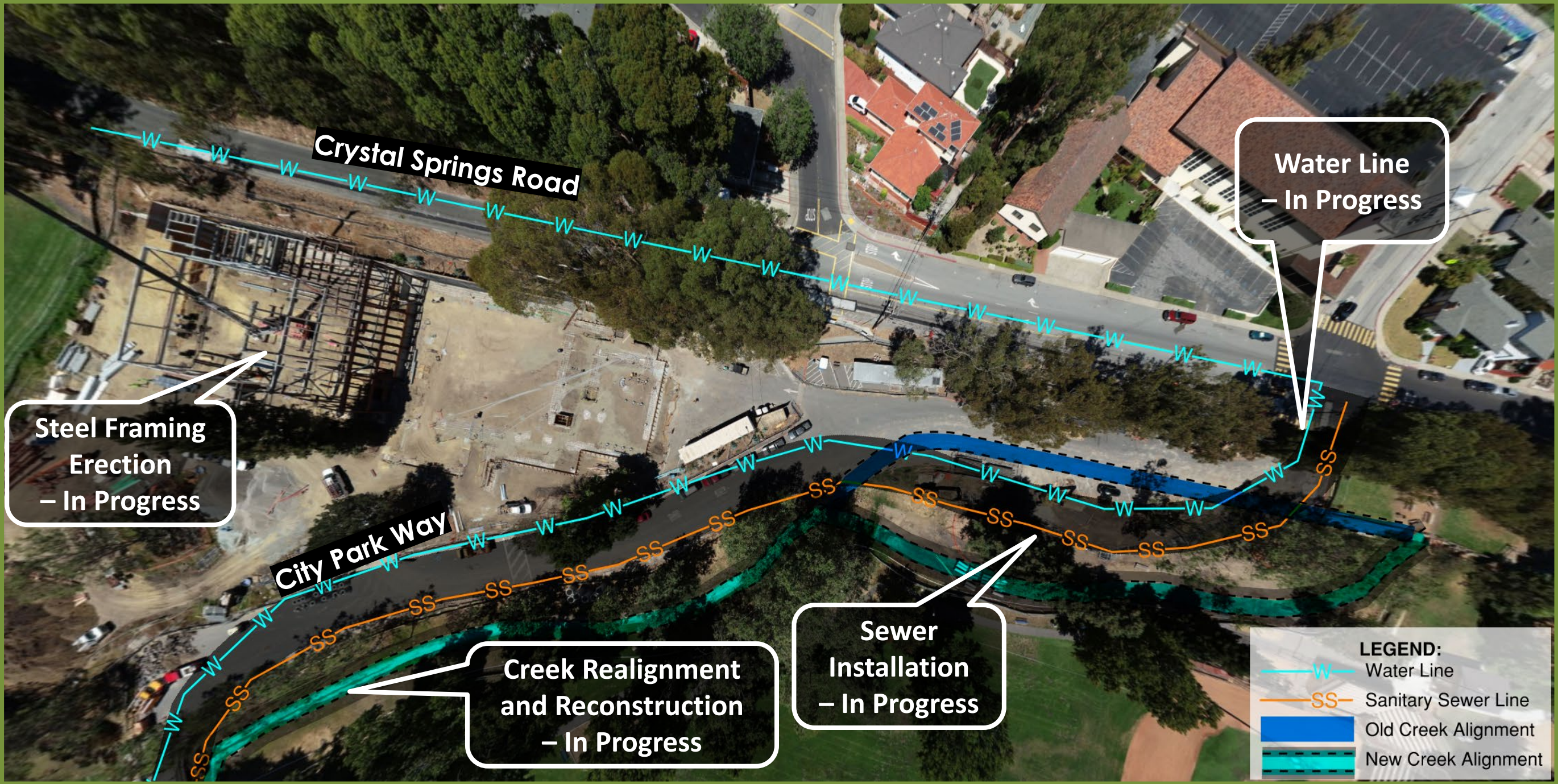
COMPLETED TO DATE (AUGUST)



Construction Update and Look Ahead Schedule

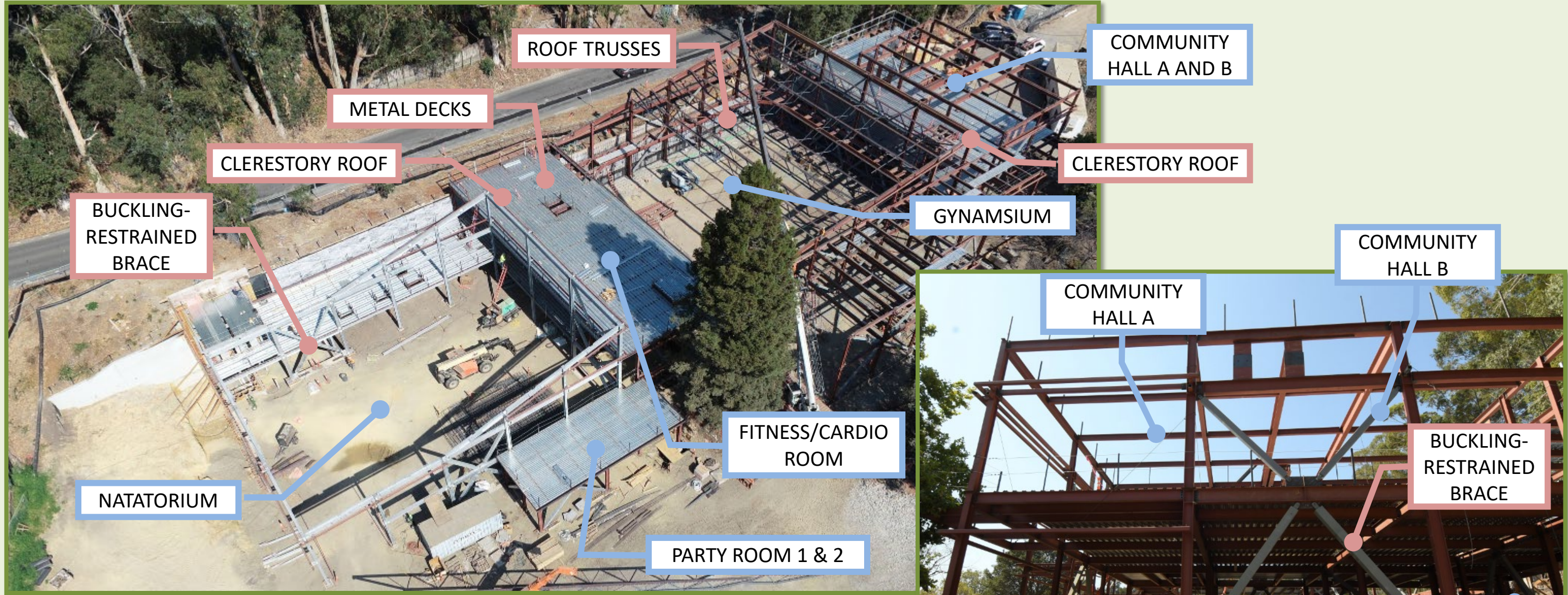


COMPLETED TO DATE (AUGUST)



Construction Update and Look Ahead Schedule

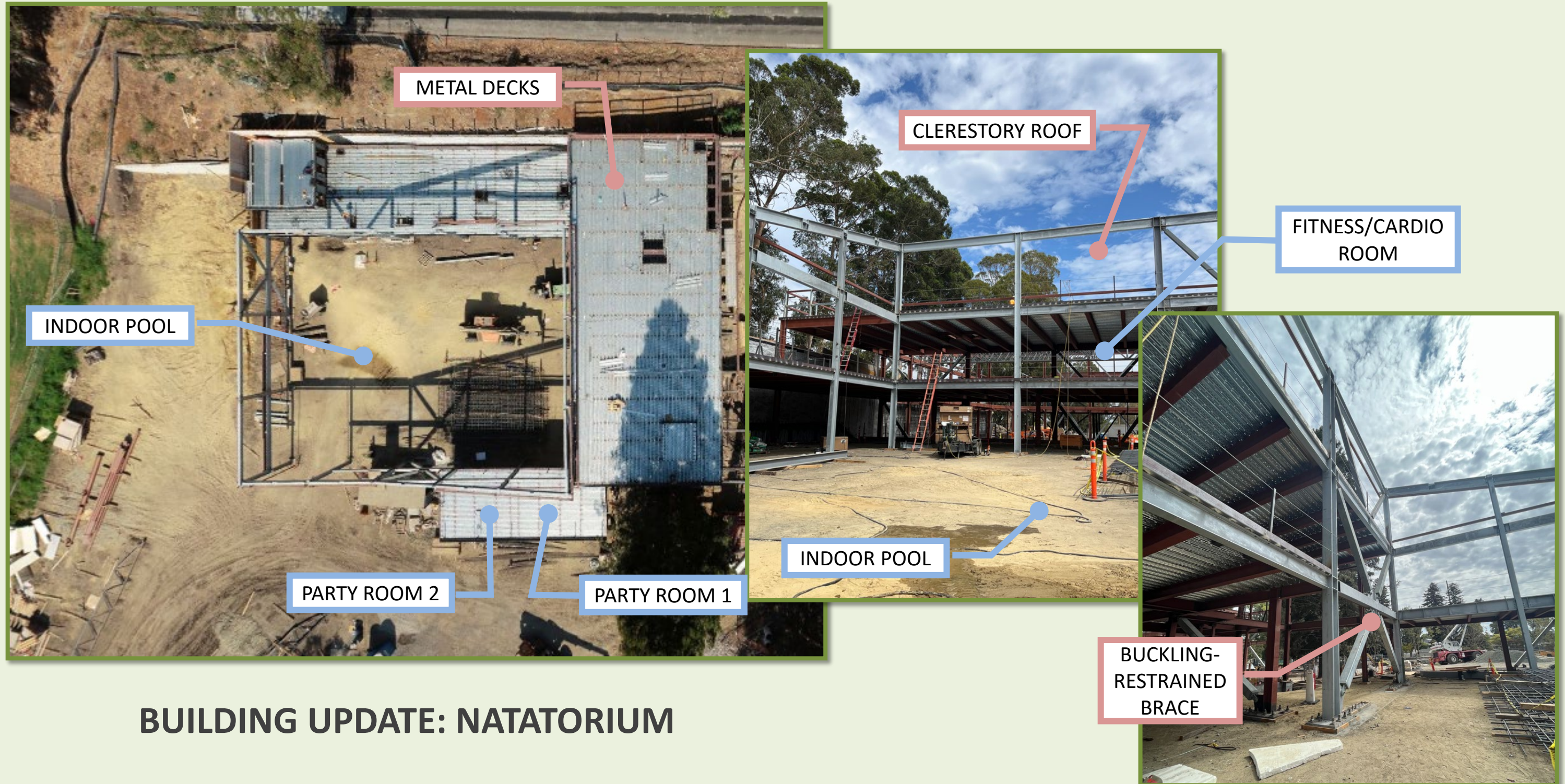
COMPLETED TO DATE (SEPTEMBER)



BUILDING UPDATE – Progressing

Construction Update and Look Ahead Schedule

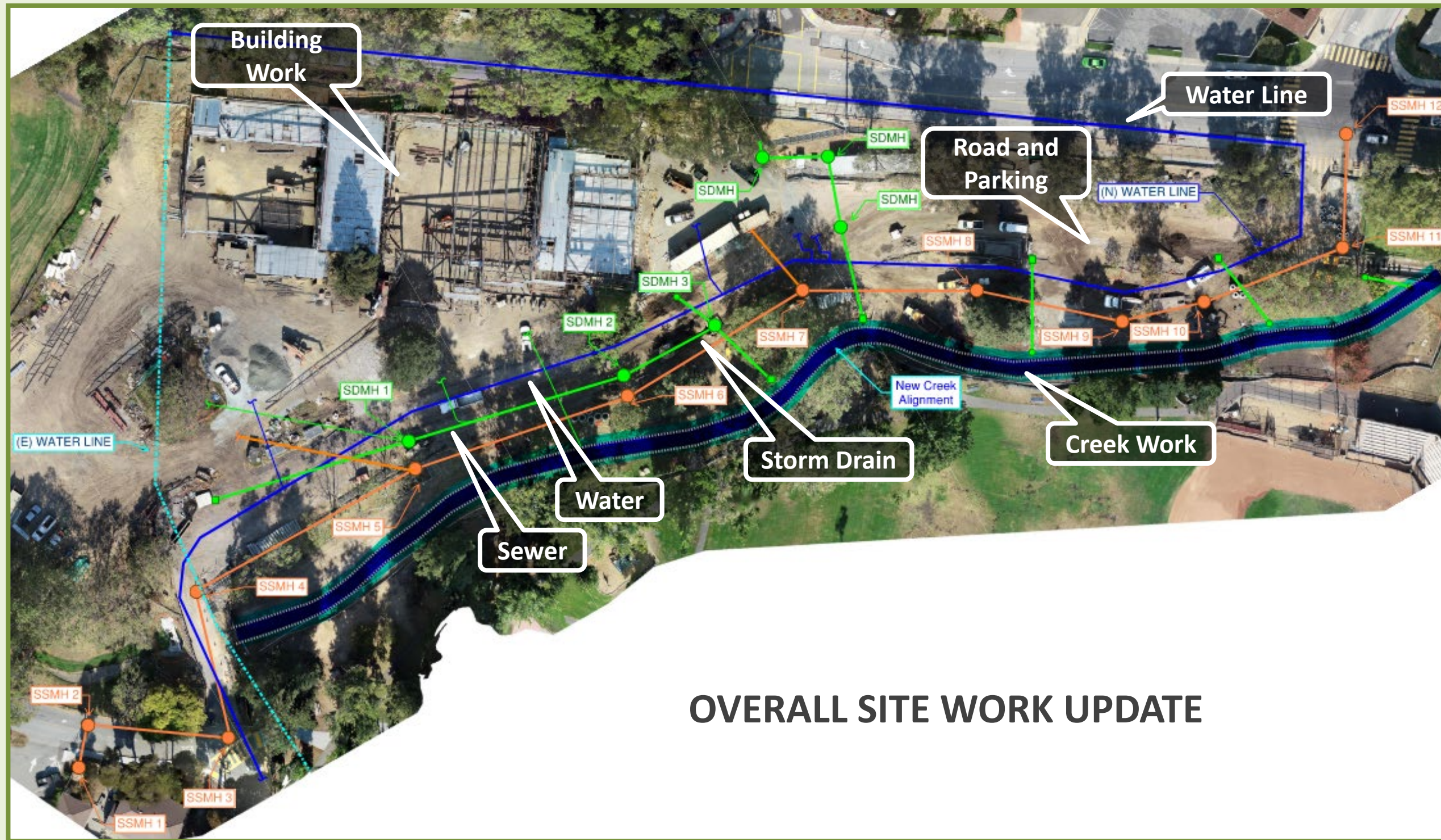
COMPLETED TO DATE (SEPTEMBER)



BUILDING UPDATE: NATATORIUM

Construction Update and Look Ahead Schedule

COMPLETED TO DATE (SEPTEMBER)



OVERALL SITE WORK UPDATE

Construction Update and Look Ahead Schedule

COMPLETED TO DATE (SEPTEMBER)



BIO RETENTION



CREEK PROGRESS



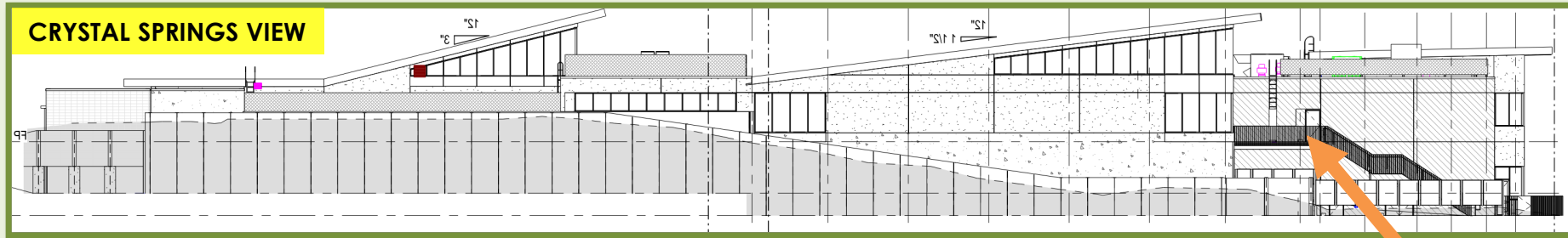
WATER LINE



STORM

Construction Update and Look Ahead Schedule

COMPLETED TO DATE (OCTOBER)



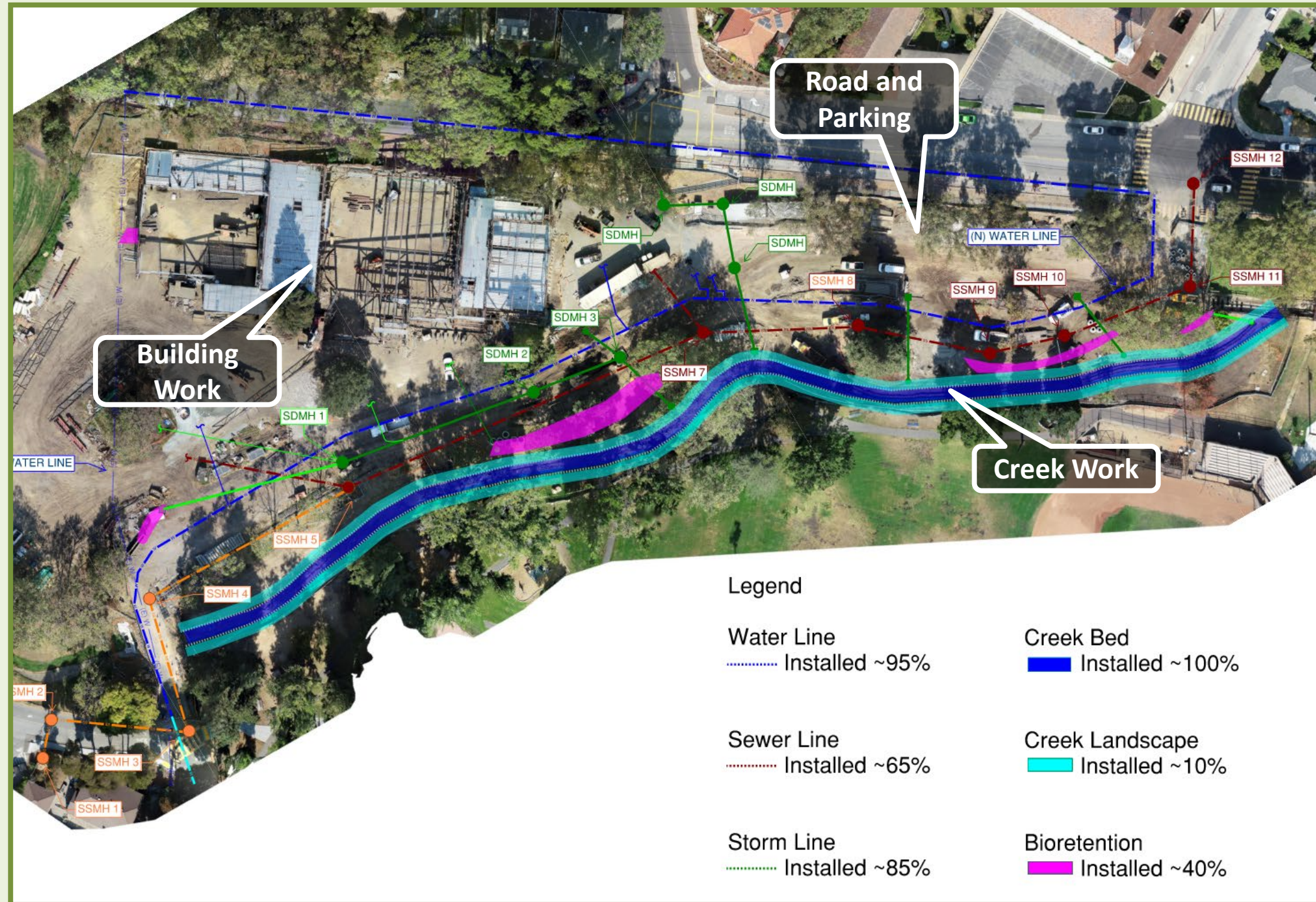
BUILDING UPDATE - Progressing

Construction Update and Look Ahead Schedule

COMPLETED TO DATE (OCTOBER)



OVERALL SITE WORK UPDATE



Construction Update and Look Ahead Schedule

COMPLETED TO DATE (OCTOBER)



ROAD REALIGNMENT AND PARKING LOT



CITY PARK WAY ENTRANCE



CREEK REALIGNMENT AND ENLARGEMENT



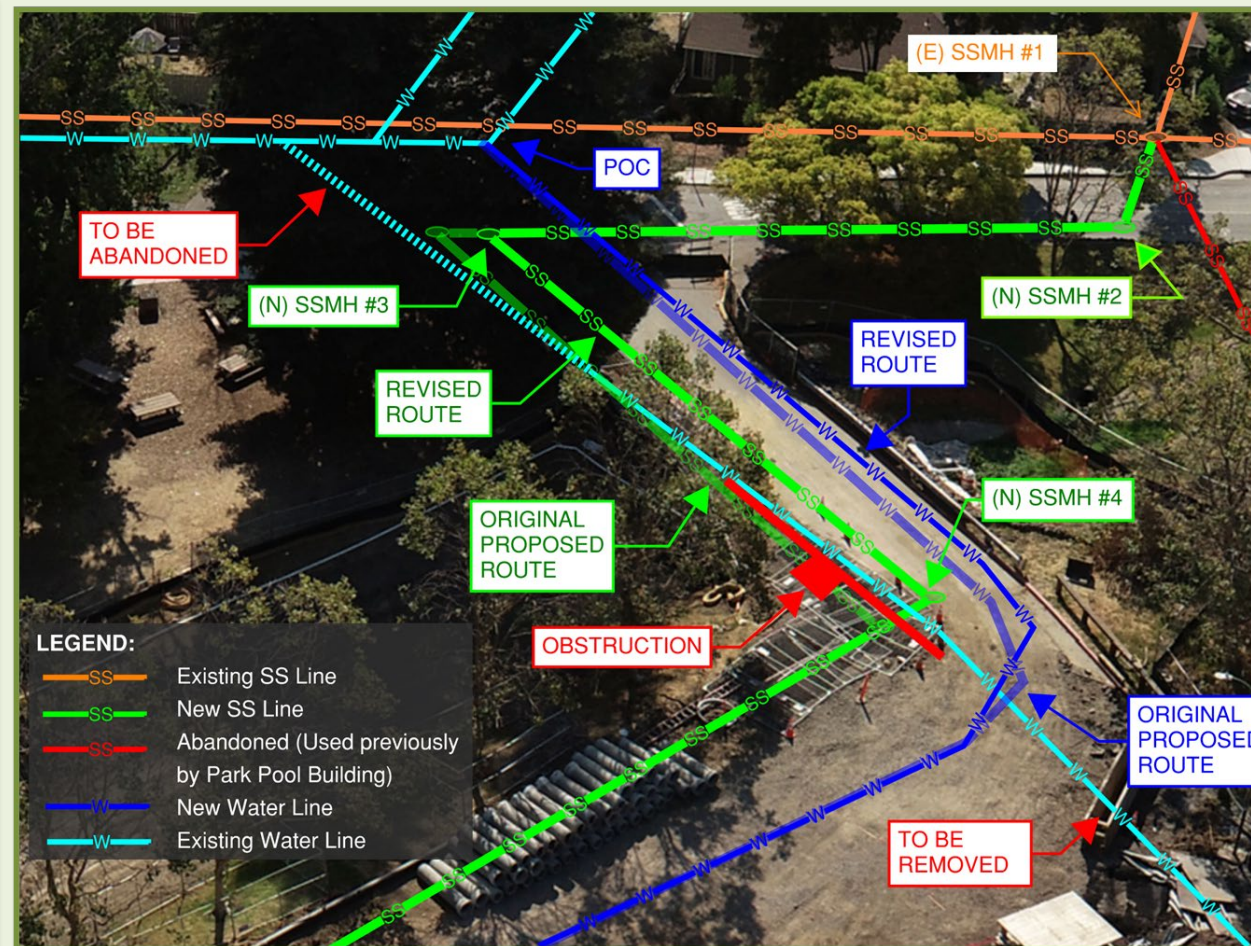
CREEK

Construction Update and Look Ahead Schedule

COMPLETED TO DATE (OCTOBER)



WATER LINE

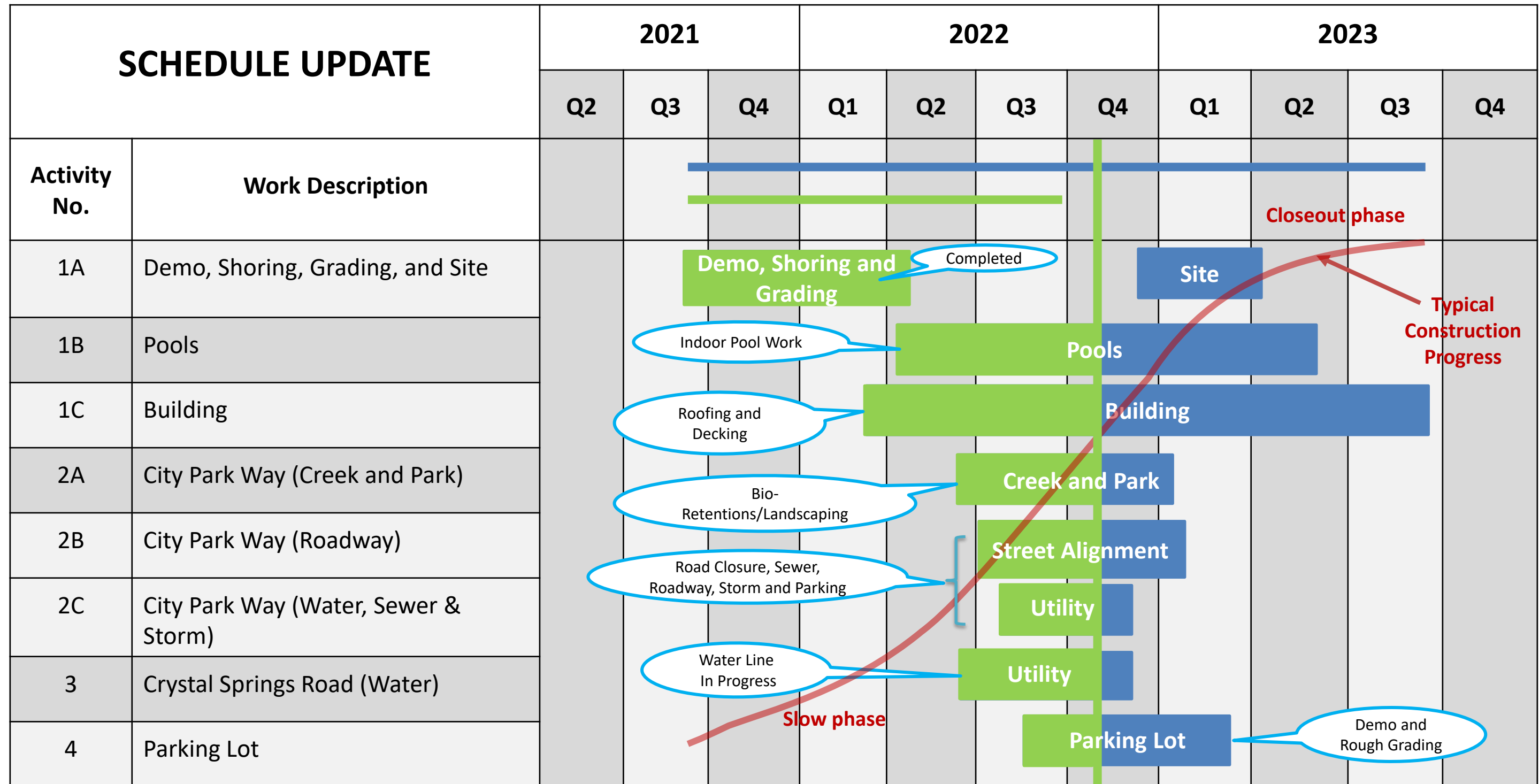


SEWER



BIO-RETENTION

Construction Update and Look Ahead Schedule



Construction Update and Look Ahead Schedule

ROAD CLOSURE UPDATE



Anticipated Dates		
Activities	Start	Finish
City Park Way Road Closure	8/1/22	12/12/22*
Demo Existing Hardscape	8/17/22	8/19/22
Creek Rough Grade Excavation	8/18/22	9/16/22
City Park Way Storm Drain	8/22/22	9/29/22
Creek Channel Construction	9/21/22	10/15/22
City Park Way Water Main	9/28/22	11/8/22
City Park Way Sewer Pipe	8/8/22	11/16/22
City Park Way Lighting/Concrete C/G/SW	10/4/22	12/6/22
City Park Way Paving/Landscaping Finishes	11/14/22	12/12/22*



Notes:
 The road closure/detour will be as follows:
 1) Option #1
 WB Traffic
 Crystal Springs to El Camino to Santa Lucia Ave
 CD Traffic
 Santa Lucia to El Camino To Crystal Springs

* Dates are subject to change.



Construction Update and Look Ahead Schedule

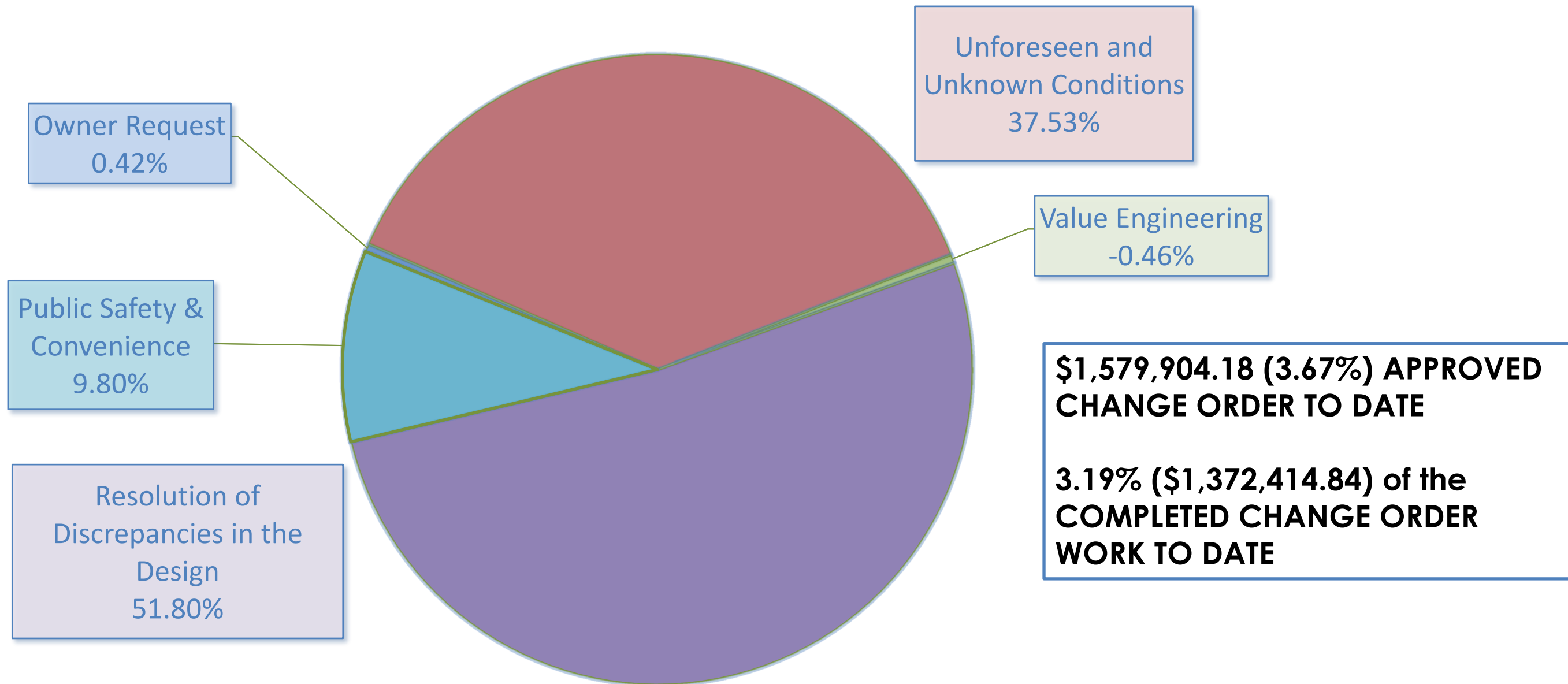
PUBLIC OUTREACH



- Door Hanger Notifications
- Portable Changeable Message Boards
- Detour Signs are in place
- Local Traffic Only Signs were installed on corners of Cypress Avenue, Acacia Avenue and Added Detour Signs
- Communicated with Google Navigation system to avoid redirecting traffic to any connecting streets
- Increased frequency of Team's daily traffic check to every hour to include traffic signals and schools in the area
- In Communication with City Consultant Traffic Engineer for any traffic and parking questions
- In Communication with Police Department to get assistance on potential violators
- Field Contact Numbers are available on all project signs and City Website
- Onsite representative is present everyday at the trailer offices
- Project Website is regularly updated
- Calls and emails are being answered and addressed



Change Order Report



Construction Update and Look Ahead Schedule

Project Budget Update



Total Project Budget:

- \$60,540,228.00

Total Expenses To Date:

- \$27,031,779.69 (44.65%)

Pre-Construction Phase Cost Total:

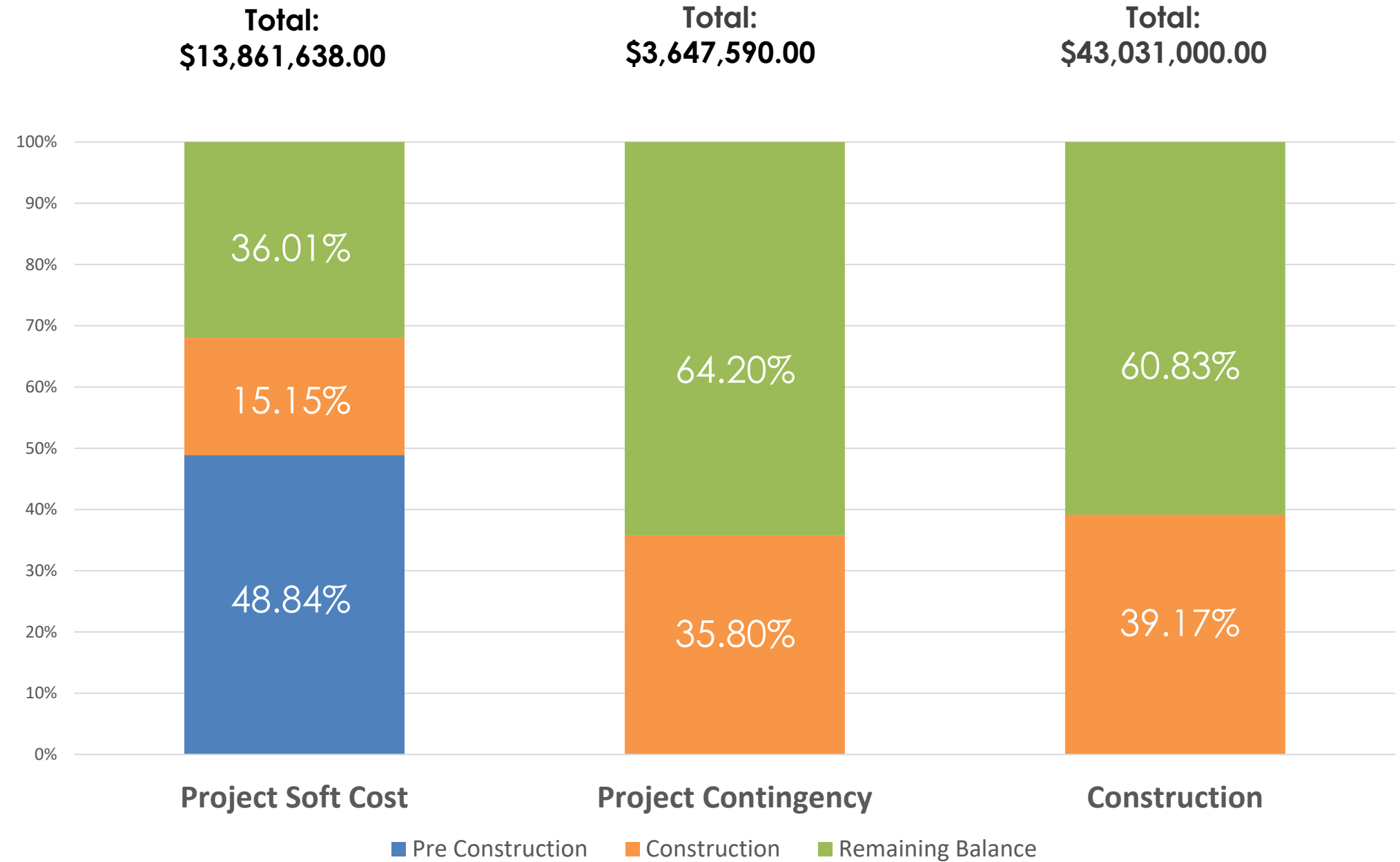
- \$6,770,384.00

Construction Phase Cost To Date:

- \$20,261,395.69

SOFT COSTS

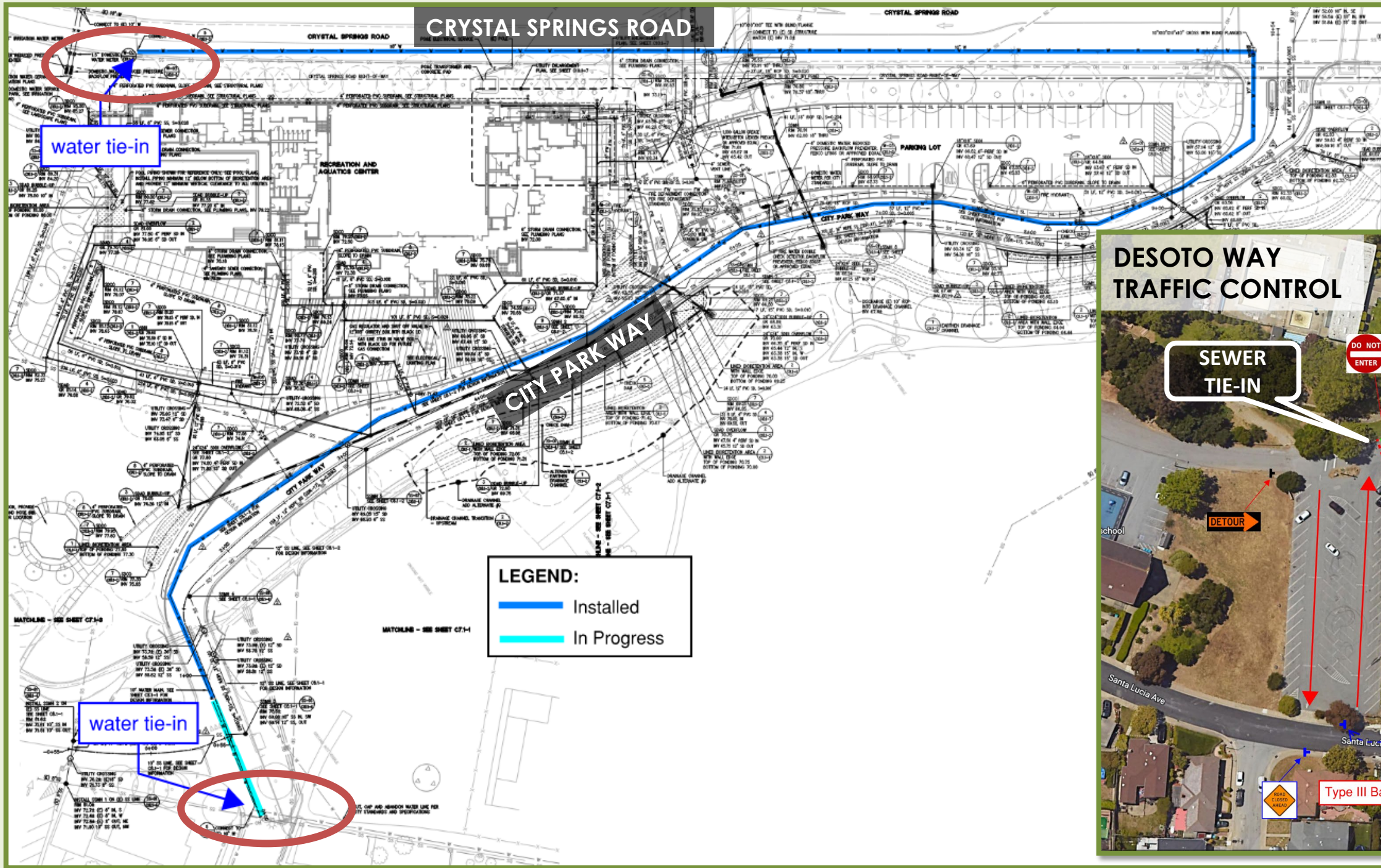
- Design (Group 4)
- Environmental
- Project Manager (CPM Associates)
- Construction Manager (Griffin Structures)
- Geotechnical, T&I, Waterproofing, Commissioning Services
- Lara Field Parking Lot
- Traffic Signals, Sewer, Water, Sidewalk, CityNet Fiber
- Temporary Space During Construction
- Furniture Fixtures and Equipment
- Electronic systems and special equipment
- Utility company connection and services
- Fees/ Administration/ Business Plan





Construction Update and Look Ahead Schedule

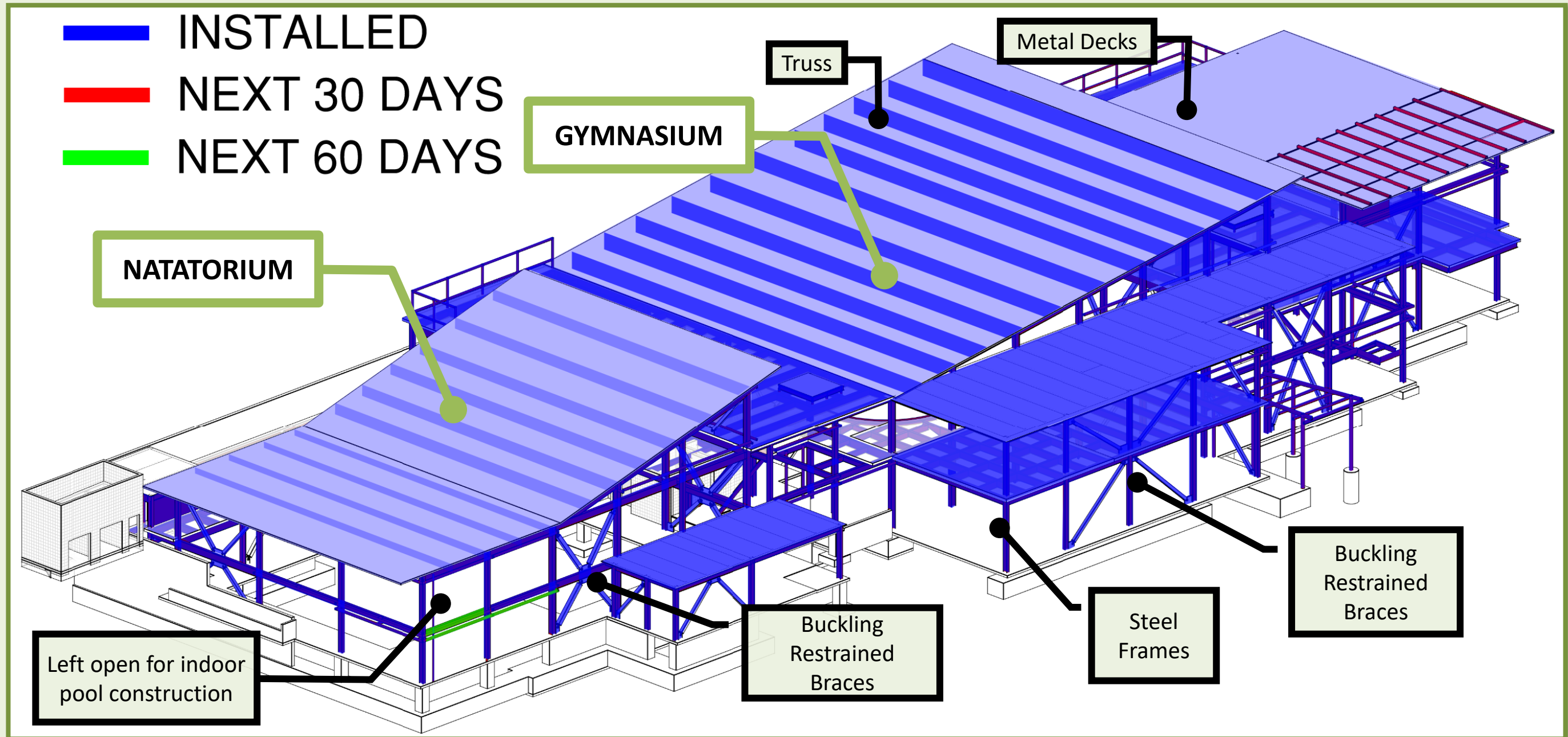
WHAT'S HAPPENING NEXT 30 DAYS?



WATER LINE TIE-IN TRAFFIC CONTROL AT DESOTO WAY AND CRYSTAL SPRINGS

Construction Update and Look Ahead Schedule

WHAT'S HAPPENING NEXT 30 DAYS AND BEYOND?



Construction Update and Look Ahead Schedule

WHAT'S HAPPENING NEXT 30 DAYS AND BEYOND?



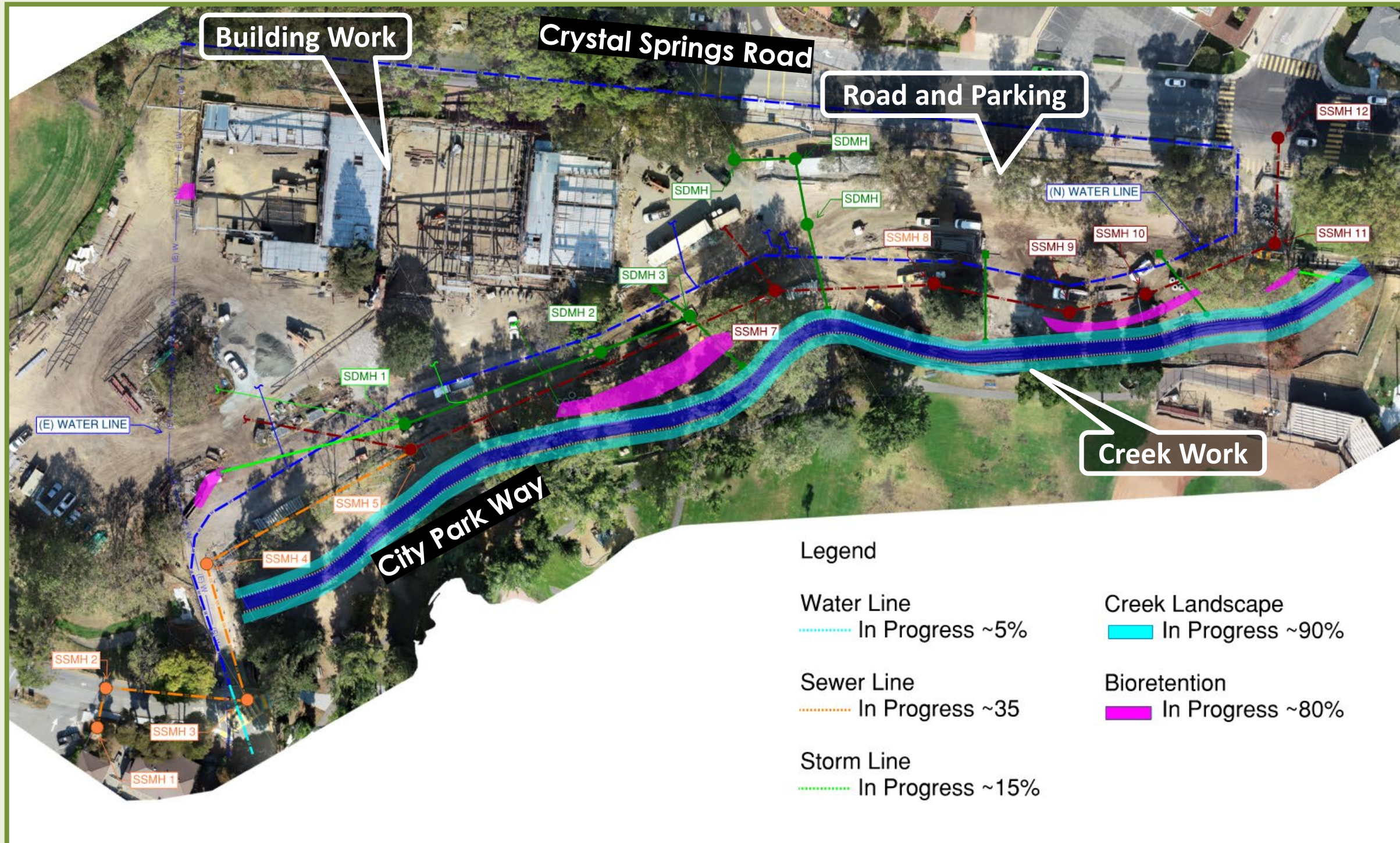
ONSITE WORK

- Continue Roofing and decking.
- Miscellaneous Joints Welding
- Building Floor Slab preparation
- Indoor Pool Shell/Deck
- Onsite Utilities (Sewer, storm drain, water, and sewer)
- Trash Enclosure
- Outdoor Pool Shell



Construction Update and Look Ahead Schedule

WHAT'S HAPPENING NEXT 30 DAYS AND BEYOND?



OFFSITE WORK

- Continue City Parkway Road Closure until December 2022
- Creek Winterization Work (Erosion Control)
- Roadway and Parking Grading
- Storm Drain, Bio-Retention, Water and Sewer will progress
- City Parkway Reconstruction
- City Parkway Opening

Construction Update and Look Ahead Schedule

OTHER RELATED PROJECTS UPDATE



Solar PV Update



Motion to set a Public Hearing date for June 28, 2022

City to review PPA (Power Purchase Agreement) with the City Attorney

PCE to execute contract with equipment providers

In Process

June 14, 2022
(City Council)

June 28, 2022
(City Council)

July/August
2022

September
2022

November
2022

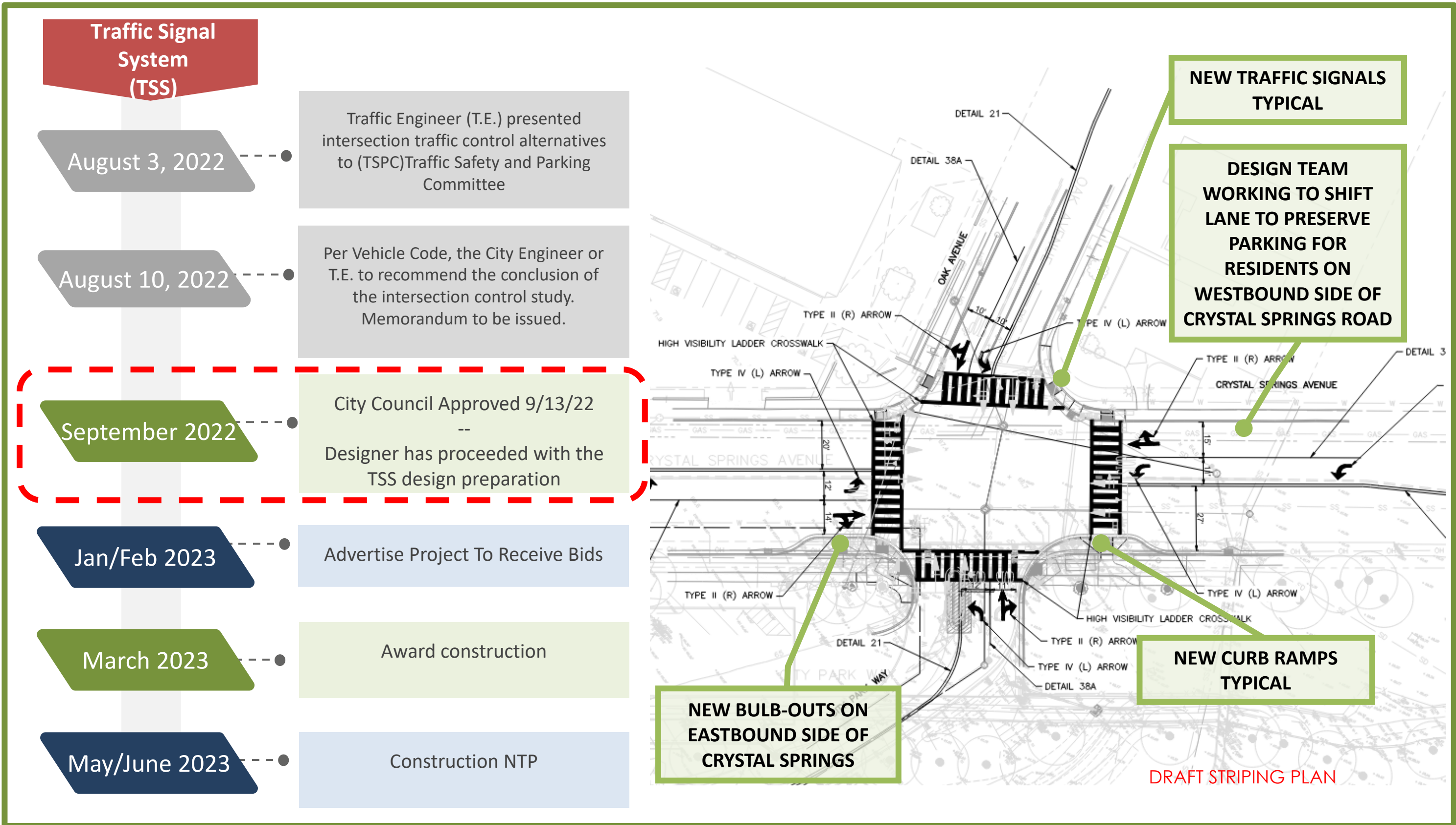
January
2023

Adopt Resolution: "Authorizing City Manager to enter into PPA with PCE"

PPA Execution with City Attorney Sign off and City Manager signature

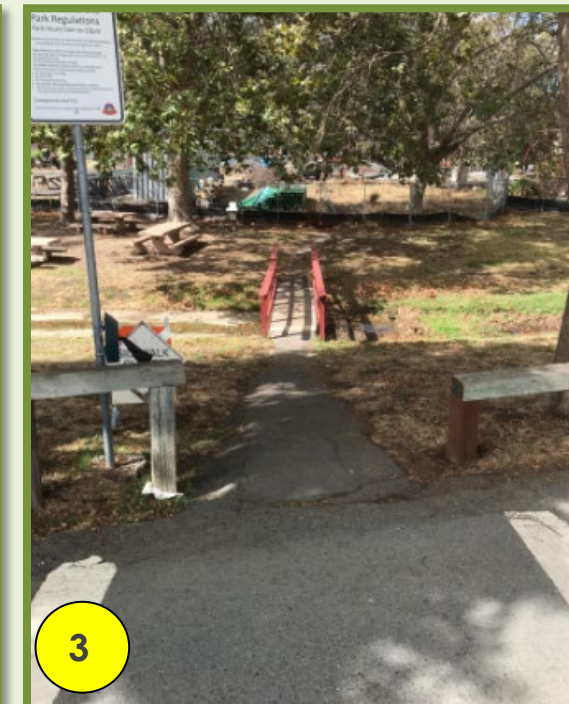
Coordination of installation with RAC Construction

Crystal Spring / Oak Street / City Parkway Intersection Improvement Project Update



Construction Update and Look Ahead Schedule

OTHER PROJECTS UPDATE



SCOPE AND ESTIMATED TOTAL COST: (\$800K)

1. ADA Ramp and Path To (Picnic Area #14)
2. Road Rehab (Beckner Shelter Road)
3. ADA Ped Bridge From Pool Parking Lot
4. Crystal Spring Sidewalk

POTENTIAL FUNDING SOURCES AND STRATEGY

- A. Measure G Funds - \$250k (Road Rehab)
- B. Project Contingency (Sidewalk)
- C. Phased the Projects (Prioritized)
- D. Request For Additional Funds

THANK YOU

sanbruno.ca.gov/RecCenterBuild