



# SAN BRUNO RECREATION & AQUATIC CENTER

Advisory Committee Update

January 18, 2023





# AGENDA

1. Construction Update and Look Ahead Schedule
  - a) Project Information Update
  - b) Completed To Date (Creek and City Park Way Update)
  - c) Schedule Update (Public Outreach)
  - d) Change Order Report / Budget Update
  - e) What's Happening Next 30 Days and Beyond?
  - f) Other Related Projects Update
    - I. Crystal Spring Road Tree Removal
    - II. Solar PV Update
    - III. City Parkway and Crystal Spring Intersection
  - g) Other Projects Update
    - I. Paving at Beckner Shelter Road Consideration
    - II. Sidewalk at Crystal Spring Road Consideration
2. Questions

# Construction Update and Look Ahead Schedule



## PROJECT INFORMATION



**Start Date:** September 2021



**Project Completion:** Fall 2023



**Estimated Cost Completed To Date:** 49.39% (December 2022)



**EarthCam Link:** [https://share.earthcam.net/RecCenterBuild/rec\\_center\\_build/camera/view\\_1](https://share.earthcam.net/RecCenterBuild/rec_center_build/camera/view_1)



Multivista Aerial Photo on 9/09/22



Multivista Aerial Photo on 01/03/23

# Construction Update and Look Ahead Schedule

## *COMPLETED TO DATE (Through 01/17/23)*



October 17, 2022

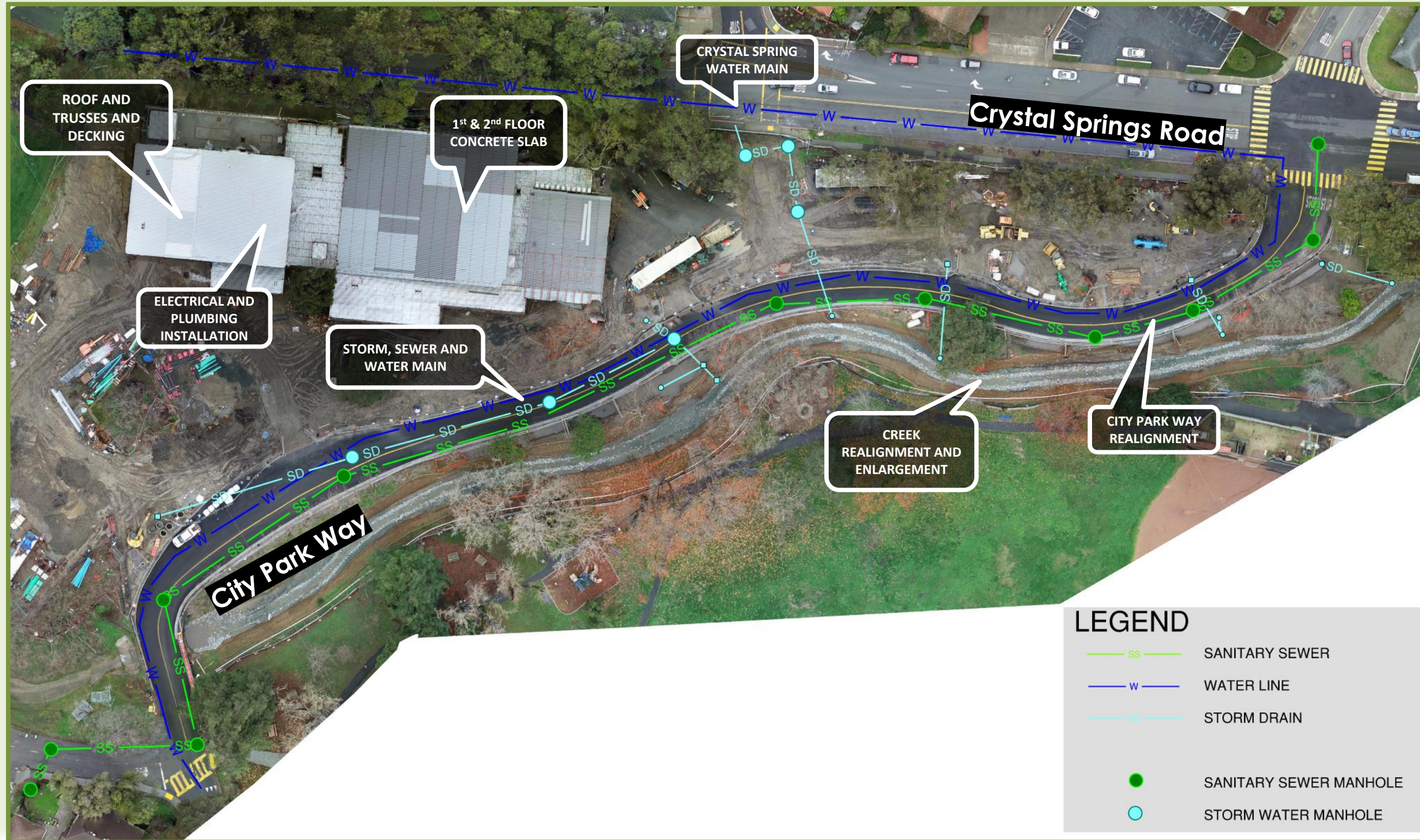


January 17, 2023



# Construction Update and Look Ahead Schedule

## *COMPLETED TO DATE (DECEMBER)*

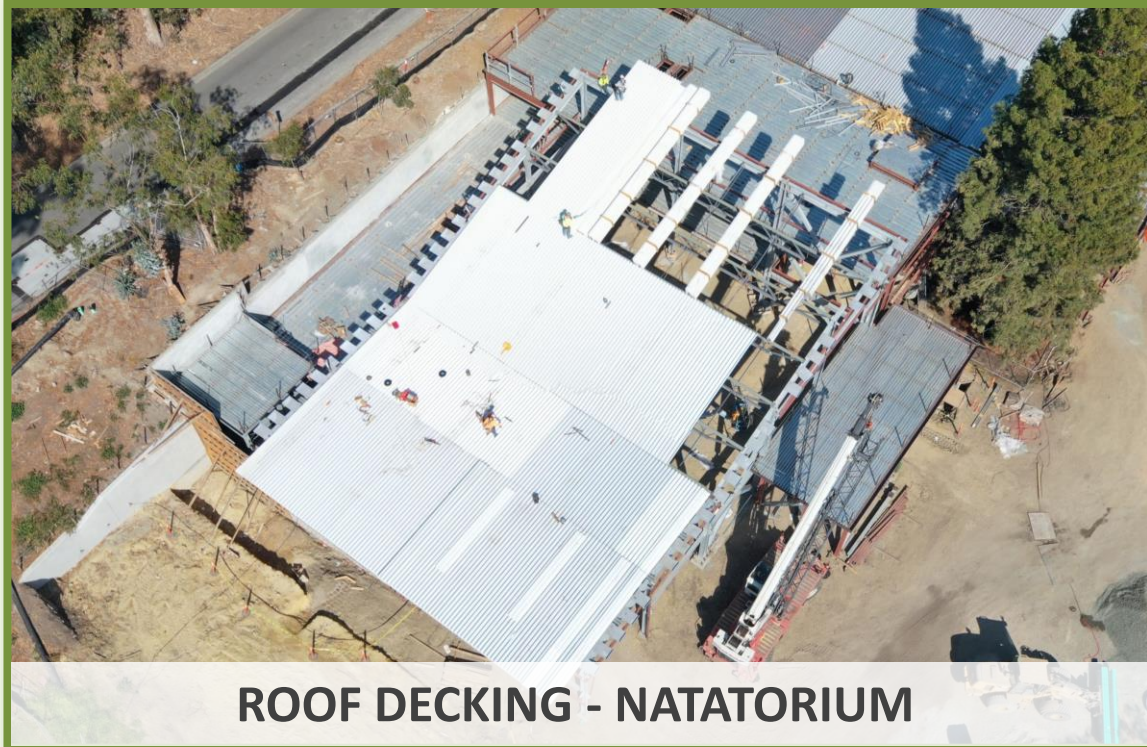


# Construction Update and Look Ahead Schedule

## *COMPLETED TO DATE (OCTOBER)*



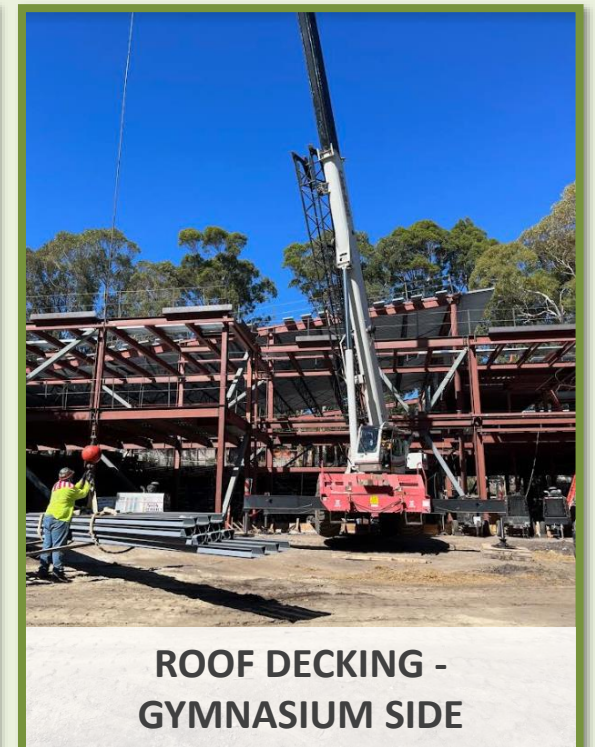
### ONSITE UPDATE:



**ROOF DECKING - NATATORIUM**



**WELDING COLUMN-BEAM CONNECTION PLATES**



**ROOF DECKING - GYMNASIUM SIDE**



**WALL "A" SHOTCRETE - NATATORIUM**



**UNDERGROUND ELECTRICAL AND PLUMBING – FIRE SPRINKLER ROOM AND CENTRAL ELECTRICAL ROOM**

# Construction Update and Look Ahead Schedule

## *COMPLETED TO DATE (OCTOBER)*



### OFFSITE UPDATE:



**CREEK REALIGNMENT**



**NEW WATER LINE GOING UNDER EXISTING STORM LINES**



**BIO-RETENTIONS**



**CITY PARK WAY ROUGH GRADE**

# Construction Update and Look Ahead Schedule

## *COMPLETED TO DATE (NOVEMBER)*



### ONSITE UPDATE:



**RUST PROTECTION - NATATORIUM**



**RUST PROTECTION – NATATORIUM**



**WELDING - GYMNASIUM**



**2<sup>ND</sup> FLOOR TOPPING SLAB  
- COMMUNITY HALL**



**2<sup>ND</sup> FLOOR TOPPING SLAB  
- CONFERENCE ROOM**



**1<sup>ST</sup> FLOOR VAPOR BARRIERS  
- CLASSROOMS**

# Construction Update and Look Ahead Schedule

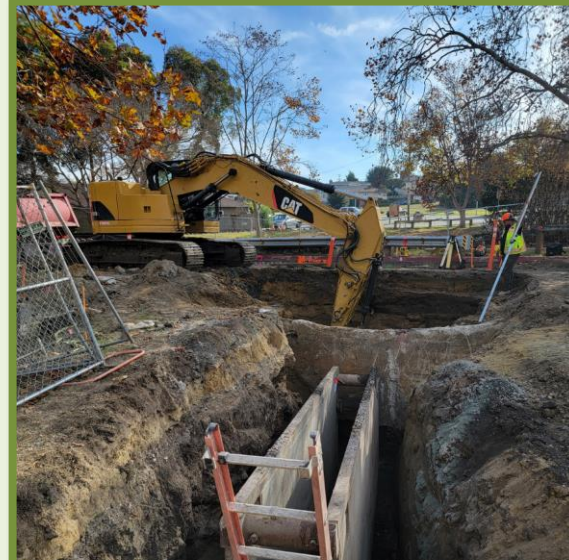
## *COMPLETED TO DATE (NOVEMBER)*



### OFFSITE UPDATE:



**WATER TIE-IN BY DESOTO ROAD  
(REMOVED TEMPORARY WATER BYPASS)**



**SEWER LINE  
INSTALLATION**



**FIRST RAIN EVENT OF THE SEASON**



**SEWER MANHOLE  
INSTALLATION**



**NEW CURB & GUTTER**

# Construction Update and Look Ahead Schedule

## *COMPLETED TO DATE (DECEMBER)*



### ONSITE UPDATE:



**CONCRETE SLAB CLASSROOMS  
- GYMNASIUM**



**CONCRETE SLAB - GYMNASIUM**



**CONCRETE SLAB LOBBY - GYMNASIUM**



**PLUMBING AND MECHANICAL**



**ROUGH-IN ELECTRICAL & PLUMBING  
- LOCKER ROOMS - NATATORIUM**



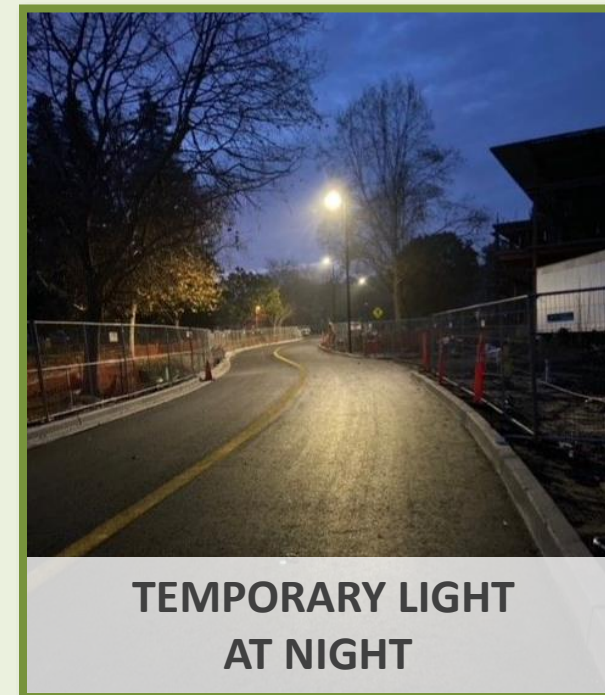
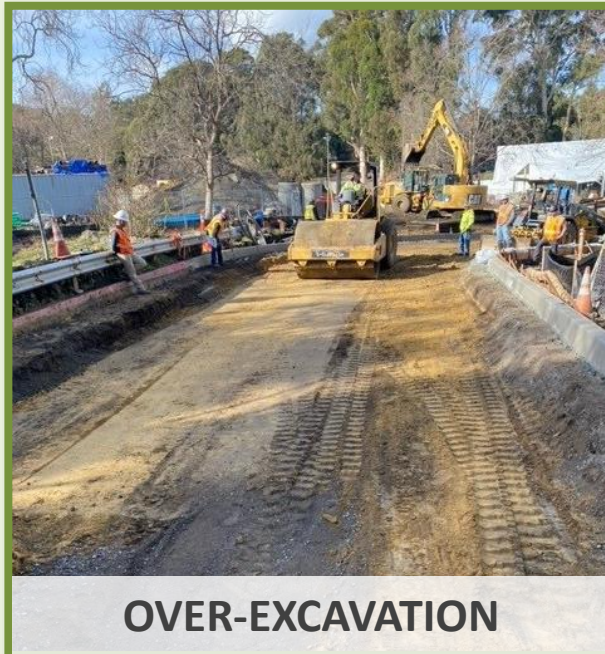
**ACCESS ROAD (January)**

# Construction Update and Look Ahead Schedule

## *COMPLETED TO DATE (DECEMBER)*



### OFFSITE UPDATE:



# Construction Update and Look Ahead Schedule

## *CREEK UPDATE*



### PRE - PROJECT CONDITION

### POST - PROJECT CONDITION

2021 DECEMBER RAIN EVENT



12/31/22 RAIN EVENT



25-YEAR STORM  
AT MAXIMUM DEPTH

OVERTOPS CITY  
PARK WAY

10-ft WIDE  
CONCRETE DITCH  
CHANNEL

PROJECT  
LIMIT

25-YEAR STORM  
AT MAXIMUM DEPTH

CONTAINED  
RUNOFFS WITHIN  
CHANNEL

26-ft WIDE  
DRAINAGE  
CHANNEL

PROJECT  
LIMIT

- 12/31/22 RAIN EVENT - 25 Year Storm
  - 25-year storm event was contained
  - Significantly reduce overbank inundation area during a 100-year storm event
- Erosion Control Restoration
- Creek Bank Improvements

# Construction Update and Look Ahead Schedule

## CITY PARKWAY UPDATE

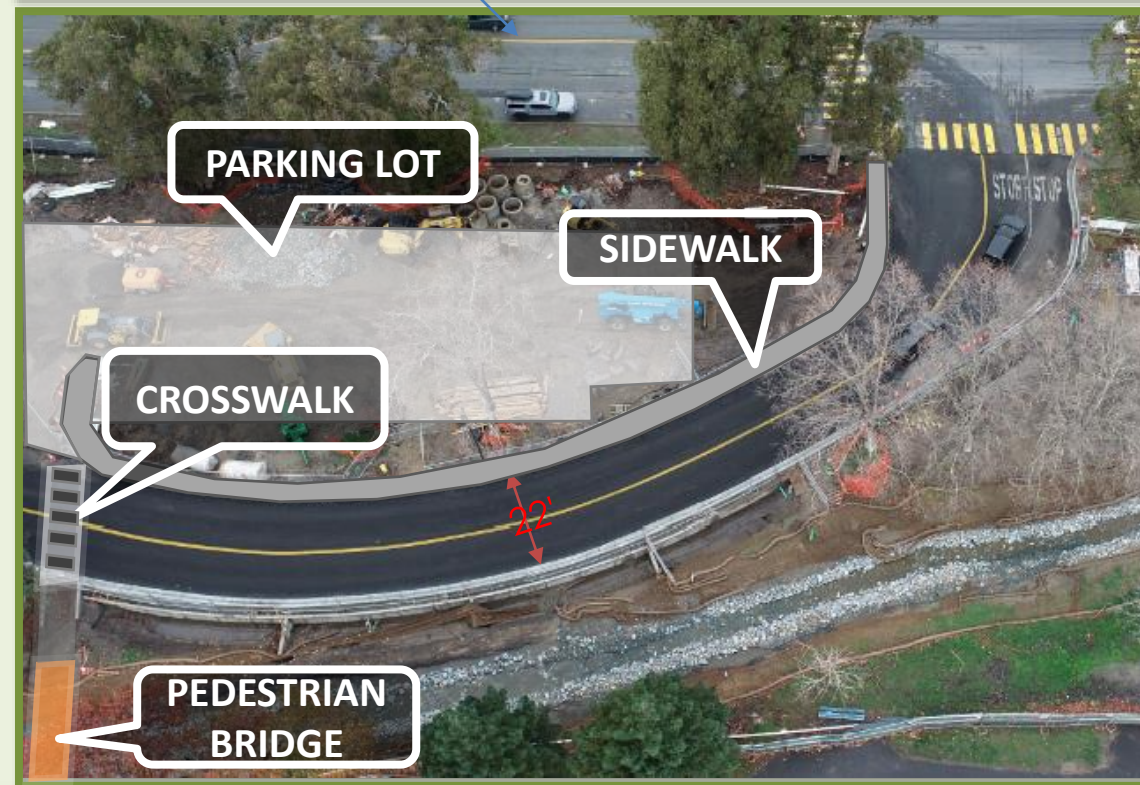


**ROAD OPEN TO PUBLIC ON DECEMBER 23, 2022**



**DAY-TO-DAY ROAD CLOSURES ARE EXPECTED**

**CHANGEABLE MESSAGE BOARD  
- NOTIFY THE PUBLIC AND CITY WEBSITE**



**Pre-Condition:**

- 24' Wide
- Parking On Both Side
  - Parking Limited during storm events
- Creek Gutter reduces road width during storm events



**Post - Condition**

- 22' Wide (Curb-to-Curb)
- New Sidewalk on one side
- New Parking Lot on one side
- Creek Gutter Relocated
- Road Width and Alignment Designed considering Pedestrian Safety, and within the Environmental Limitations

# Construction Update and Look Ahead Schedule



## ***COMPLETED CRITICAL ACTIVITIES***

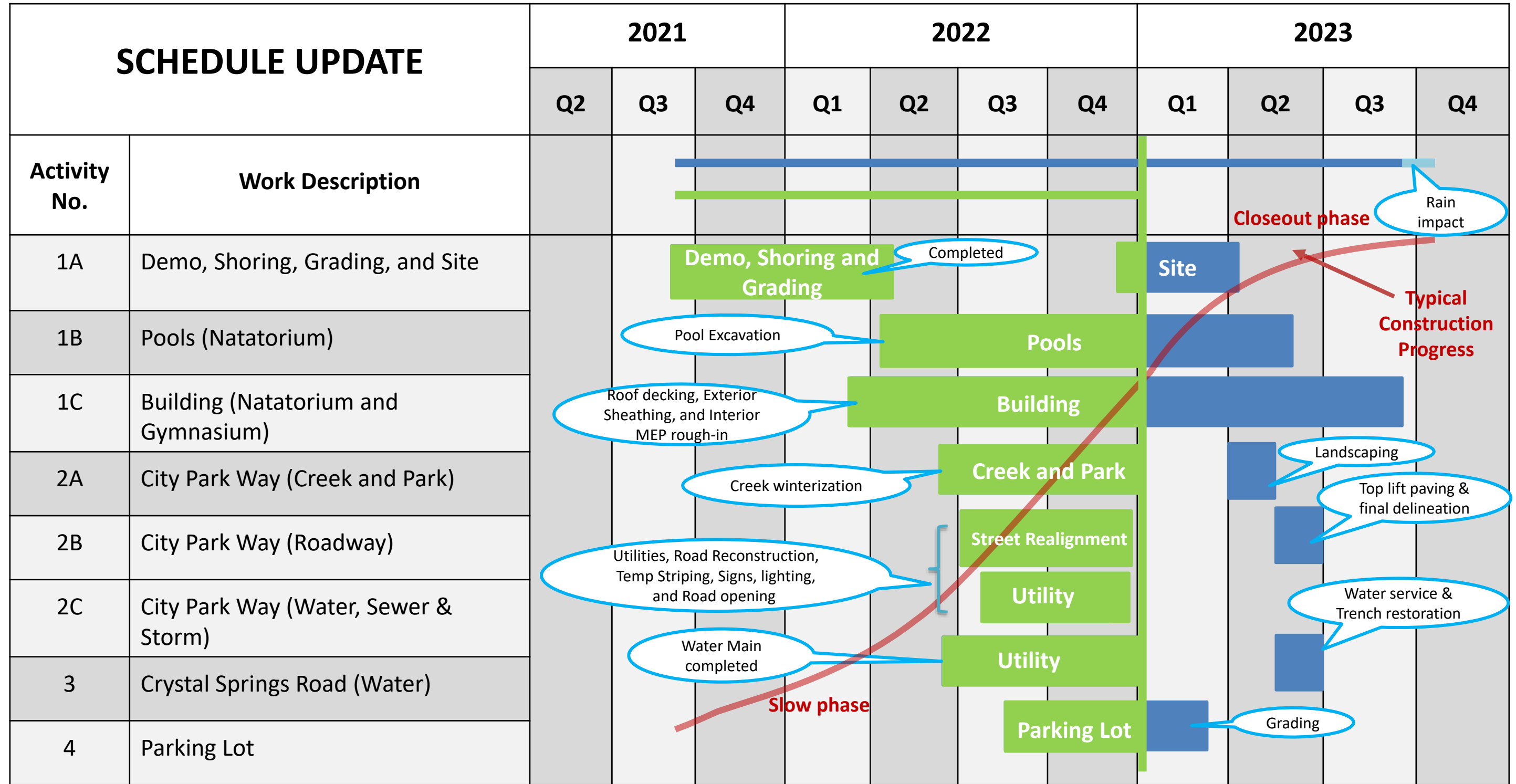
### **ONSITE**

- Gymnasium and Natatorium:
  - Steel Framing and Roof Trusses
  - Roof Decking
  - Started Fire Protection (Mechanical Hangers)
  - Plumbing (Restrooms>Showers)
  - Concrete Floor Slabs 2nd Floor
  - Under Slab Utilities
  - Concrete Floor Slabs (1st Floor Gymnasium)

### **OFFSITE**

- Creek Modification, Enlargement, and Extension
- Sewer and Water Main at City Park Way
- Water Main at Crystal Springs
- Removal of Temporary Water Bypass
- Storm Drainage System at City Park Way
- City Park Way Reconstruction
- City Park Way Reopening

# Construction Update and Look Ahead Schedule



# Construction Update and Look Ahead Schedule

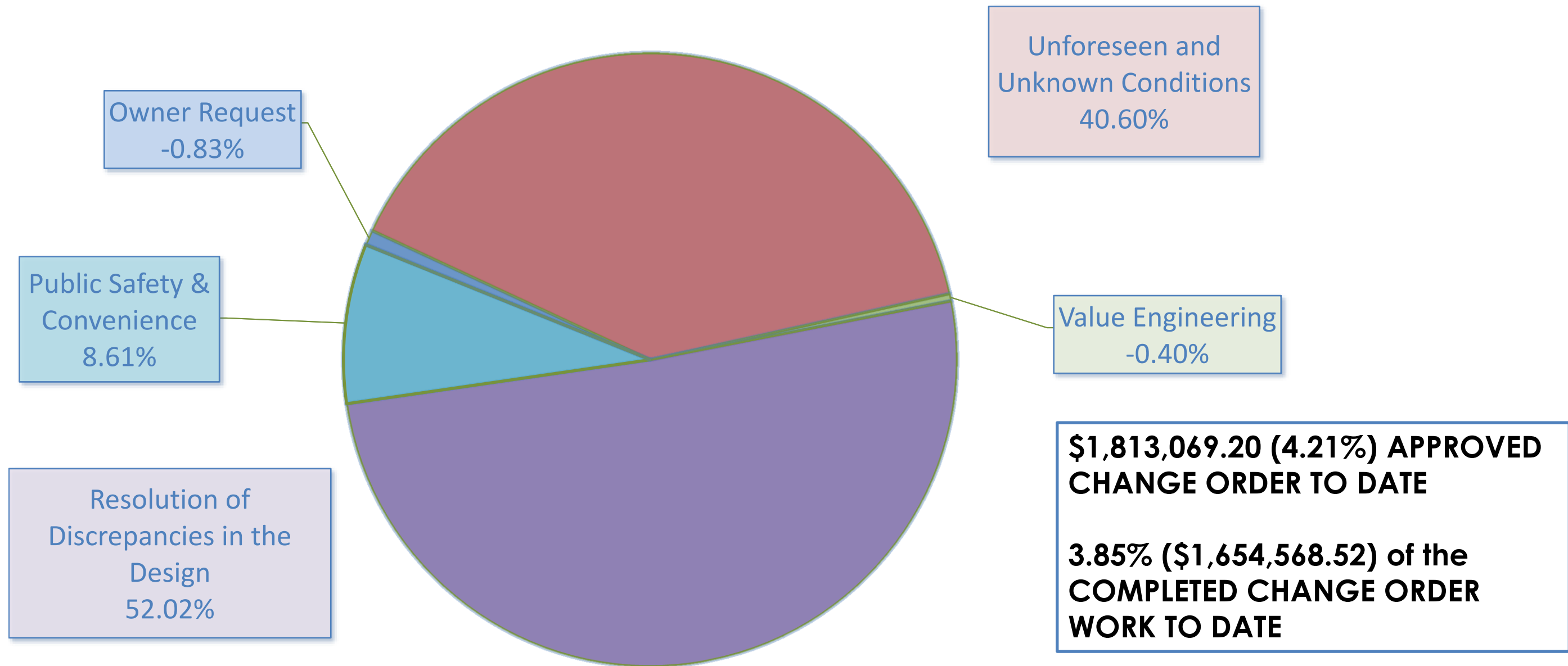
## *PUBLIC OUTREACH*



- Project Website is regularly updated
- Portable Changeable Message Boards will be used for Future Road Closures
- Detour Signs will be placed as needed
- Communicate with Google Navigation system as needed
- Field Contact Numbers are available on all project signs and City Website
- Daily onsite representative is available at the trailer office
- Calls and emails are being answered and addressed



## Change Order Report



# Construction Update and Look Ahead Schedule

## Project Budget Update



### Total Project Budget:

- \$60,540,228.00

### Total Expenses To Date:

- \$32,381,319.08 (53.49%)

### Pre-Construction Phase Cost Total:

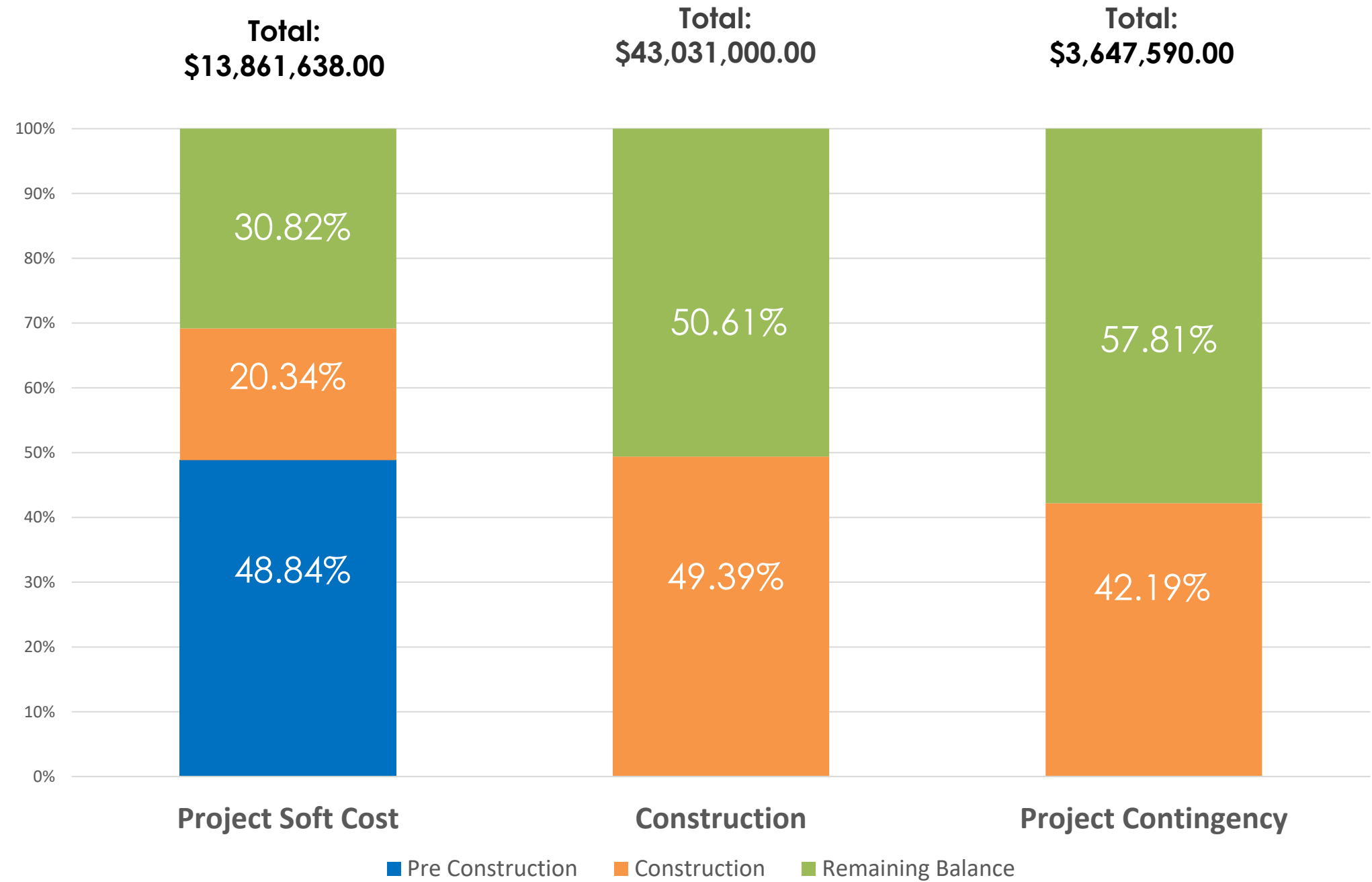
- \$6,770,384.00

### Construction Phase Cost To Date:

- \$25,610,935.08

### SOFT COSTS

- Design (Group 4)
- Environmental
- Project Manager & (CPM Associates)
- Construction Manager (Griffin Structures)
- Geotechnical, T&I, Waterproofing, Commissioning Services
- Lara Field Parking Lot
- Traffic Signals, Sewer, Water, Sidewalk, CityNet Fiber
- Temporary Space During Construction
- Furniture Fixtures and Equipment
- Electronic systems and special equipment
- Utility company connection and services
- Fees/ Administration/ Business Plan



# Construction Update and Look Ahead Schedule

## *WHAT'S HAPPENING NEXT 30 DAYS AND BEYOND?*



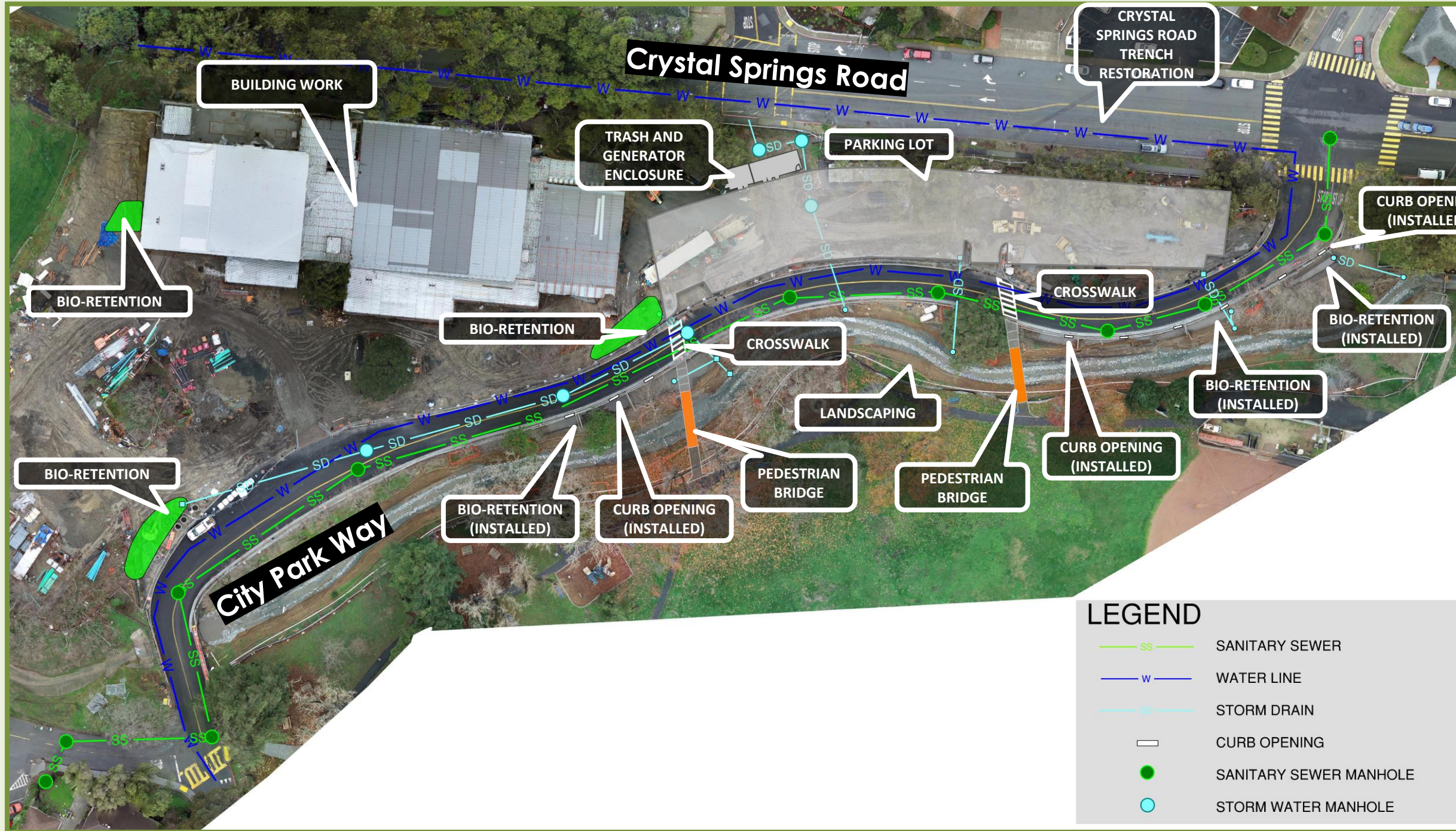
### ONSITE WORK

- 1st Floor Under Slab Utility Work at the Natatorium
- 2nd Floor Mechanical, Electrical, and Plumbing
- Install exterior walls sheathing
- Indoor pool excavation, rebar, electrical and grounding, form and pour pool floor and shotcrete

# Construction Update and Look Ahead Schedule



## WHAT'S HAPPENING NEXT 30 DAYS AND BEYOND?



### OFFSITE WORK

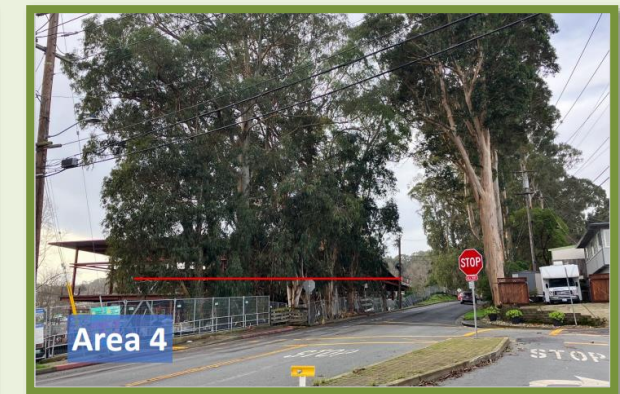
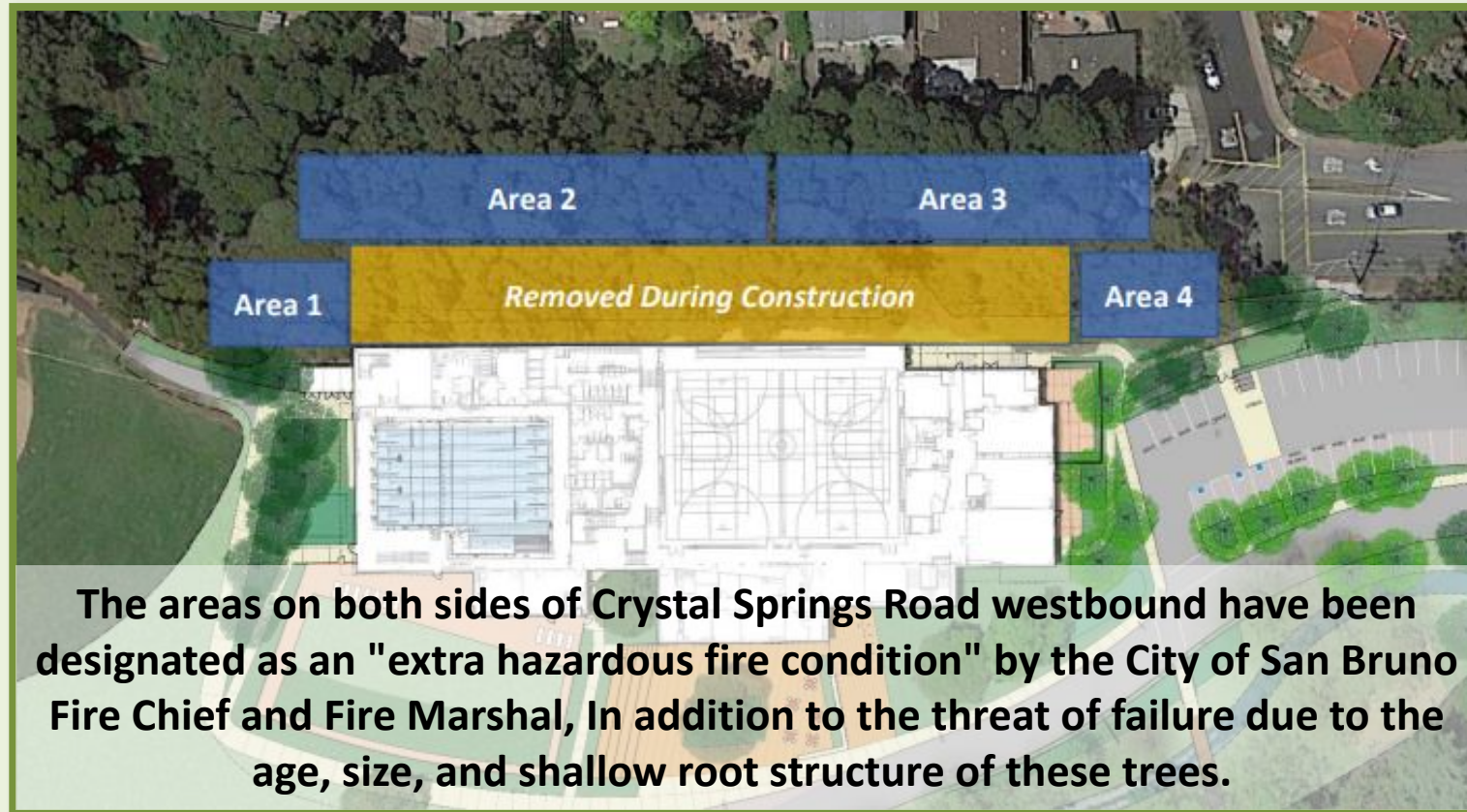
- Storm Water Management
- Bio-Retentions
- Pedestrian Bridges over Creek
- Trash and Generator Enclosure
- Creek Bank Restoration
- Landscape Work

# Construction Update and Look Ahead Schedule

## *OTHER RELATED PROJECTS UPDATE*



# Crystal Springs Tree Removal (Proposed)



**January 24, 2023** – Staff To Request City Council Adopt Resolution Authorizing the City Manager to Amend the Agreement with **West Coast Arborist, Inc.** in an amount not to exceed **\$201,600 to remove trees.**

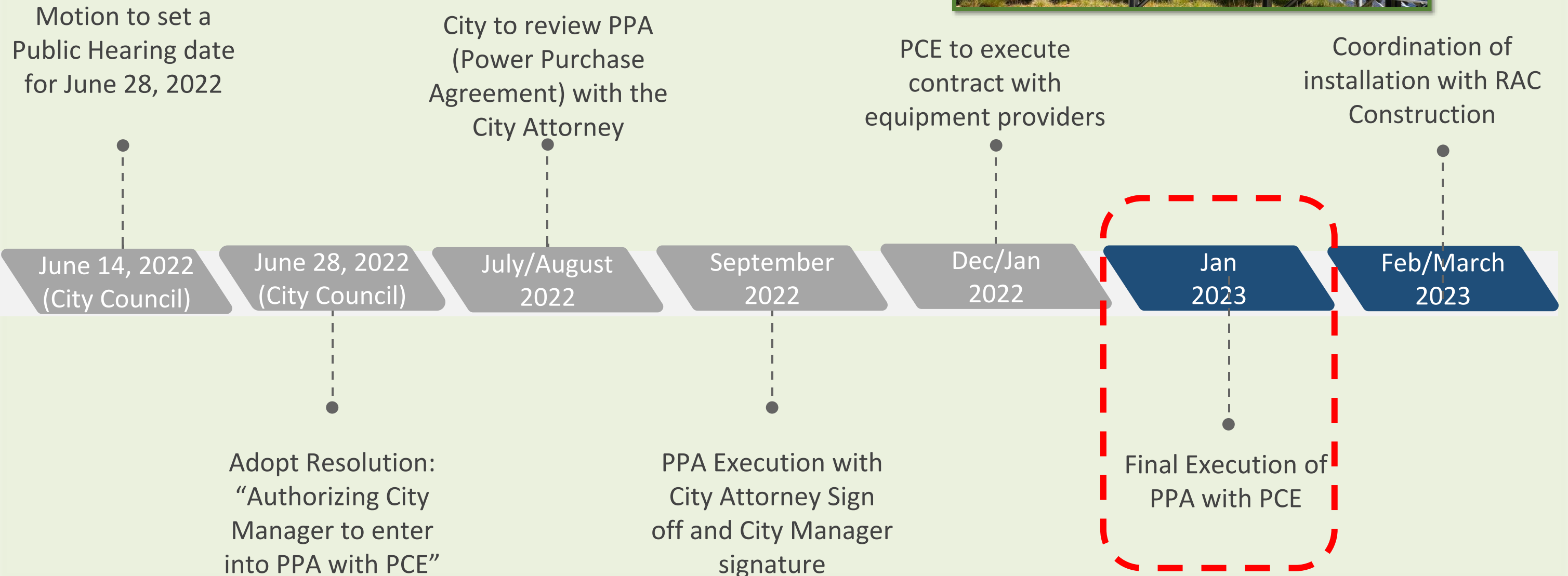
Funding Source: **RAC Contingency Fund**  
**RAC Contingency will be reduced from 57% to 52.28%**

# Construction Update and Look Ahead Schedule

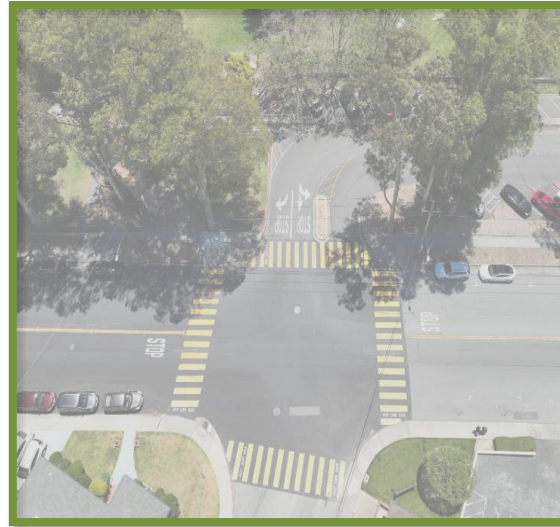
## *OTHER RELATED PROJECTS UPDATE*



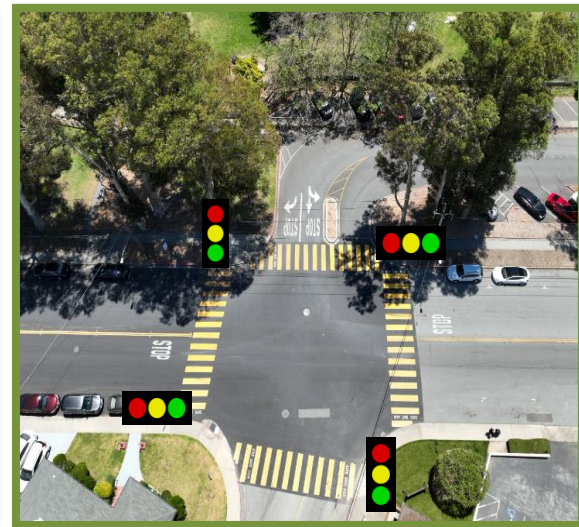
### Solar PV Update



# Crystal Spring / Oak Street / City Parkway Intersection Improvement Project Update



All Way Stop (existing)



Traffic Signal System (TSS)



Mini Roundabout (MRA)



Single-lane Roundabout (RA-1)

Traffic Engineer (T.E.) presented intersection traffic control alternatives to (TSPC) Traffic Safety and Parking Committee

Designer proceeded with the TSS design preparation

Advertise Project To Receive Bids

Construction NTP



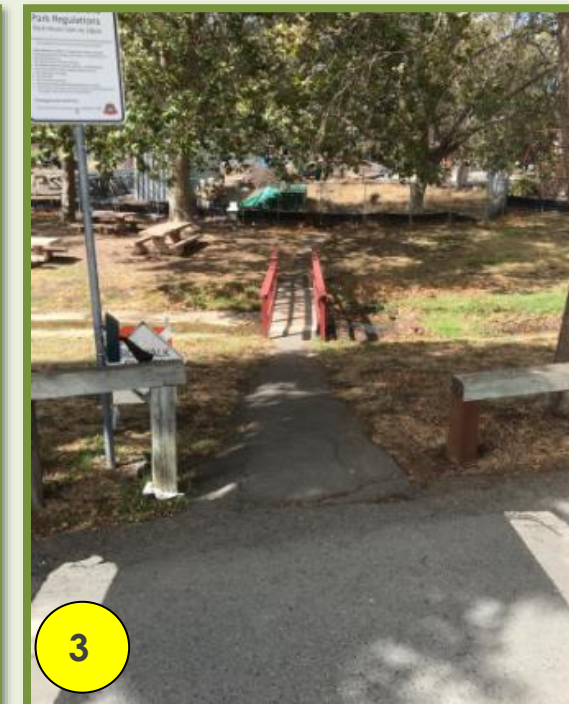
Per Vehicle Code, the City Engineer or T.E. to recommend the conclusion of the intersection control study. Memorandum to be issued.



Award construction

# Construction Update and Look Ahead Schedule

## *OTHER PROJECTS UPDATE*



### SCOPE AND ESTIMATED TOTAL COST: (\$800K)

1. ADA Ramp and Path To (Picnic Area #14)
2. Road Rehab (Beckner Shelter Road)
3. ADA Ped Bridge From Pool Parking Lot
4. Crystal Spring Sidewalk

### POTENTIAL FUNDING SOURCES AND STRATEGY

- A. Measure G Funds - \$250k (Road Rehab)
- B. Project Contingency (Sidewalk)
- C. Phased the Projects (Prioritized)
- D. Request For Additional Funds

# THANK YOU

[sanbruno.ca.gov/RecCenterBuild](https://sanbruno.ca.gov/RecCenterBuild)